

# LADO Education Safeguarding Advisory Service Child Protection Newsletter

**2024-25: Term 5**

## Welcome

Welcome to the 5<sup>th</sup> Child Protection Newsletter for the 2024-25 academic year. We hope that the following articles and information we share will be useful for you.

This newsletter is published by the LADO Education Safeguarding Advisory Service and issued to schools, early years providers and local authority staff.

This newsletter aims to help DSLs keep up to date with key local and national safeguarding guidance and procedures, to support them in carrying out their role.

For this newsletter to be effective, please ensure that it is shared with all Designated Safeguarding Leads in your organisation and other staff as appropriate. DSLs may also wish to extract and share content with their wider staff group as part of providing at least annual safeguarding updates.

We include links to external websites in our articles; we try and provide useful resources but cannot be responsible for their content and advice and some information/events are time limited so may have expired.

## IN THIS ISSUE

- [Welcome](#)
- [National Safeguarding Updates](#)
- [Local Safeguarding Updates](#)
- [Core Safeguarding Training for DSLs](#)
- [Online Safety](#)
- [National events and Resources](#)
- [Contacts](#)

**KENT LADO EDUCATION  
SAFEGUARDING  
ADVISORY SERVICE**  
KEEPING CHILDREN SAFE IN  
THE CHILDREN'S WORKFORCE

## National Safeguarding Updates

### Working Together to Safeguard Children

The Department for Education (DfE) has added new materials to support [‘Working Together to Safeguard Children’](#), the statutory guidance on multi-agency working in England. These include [an illustrated guide](#), [an animated video](#) and a toolkit of resources designed for practitioners to share and use with children, young people and their families.

All children should be helped, supported and protected when things are difficult, and these resources can help to explain how agencies work together to do this. Practitioners who would like to use the toolkit can request it via [email](#).

## Local Safeguarding updates

### Reminder from Integrated Children’s Services: Urgent Referrals

In time-critical circumstances, where a child is at immediate risk of harm, or may be unsafe to go home, DSLs should be submitting an urgent [Request for Support](#) to Integrated Children’s Services in the first instance, rather than calling the Front Door; urgent requests for support are prioritised and are received immediately when submitted, whereas communication via the contact centre may cause a delay.

Schools have no legal powers to withhold a child from their parents, so it is vital that an urgent request for support is submitted through the correct channel as soon as possible.

### Relational Approaches to support School Belonging and Attendance

Children being absent from education for prolonged periods and/or on repeat occasions can act as a vital warning sign to a range of safeguarding issues. This [new Guide and Toolkit](#), developed by the [Virtual School Kent](#) and the [Kent Educational Psychology Service](#), aims to support schools in promoting a relational based, trauma-informed, nurturing environment; creating a sense of connection and school belonging to support all vulnerable children, particularly those who may struggle to attend school.

## Core Safeguarding Training for DSLs

Our training courses for terms one and two of the 24-25 academic year are published on The Education People website:

- [Early years training](#)
- [Schools/colleges training](#)

21/05/2025	DSL Refresher Training	Singleton Env Centre, Ashford, TN23 5LW
04/06/2025	New to Role DSL Training	Mercure Tunbridge Wells, Pembury, TN2 4QL
05/06/2025	DSL Refresher Training	Mercure Maidstone Great Danes, ME17 1RE
10/06/2025	New to Role DSL Training	Virtual
12/06/2025	DSL Refresher Training	Eastgate 141 Springhead Parkway, DA11 8AD
17/06/2025	New to Role Early Years (EY) DSL	Mercure Tunbridge Wells, Pembury, TN2 4QL
18/06/2025	Online Safety for DSL	Bridgewood Manor Hotel, ME5 9AX
19/06/2025	Early Years Basic Awareness	Virtual
24/06/2025	New to Role Early Years (EY) DSL	Virtual
26/06/2025	New to Role DSL Training	Eastgate 141 Springhead Parkway, DA11 8AD
01/07/2025	DSL Refresher Training	Holiday Inn, Wrotham Heath TN15 7RS
02/07/2025	New to Role DSL Training	Kent Invicta, Ashford, TN24 0LH
08/07/2025	Early Years DSL Refresher	Ashford International Hotel, TN24 8X

Dates for next academic year 2025/26 will be published in the next newsletter, as soon as venues are provisionally booked.

The service also has a number of '[on demand](#)' e-Learning courses available for DSLs and staff. These courses have all been updated over the summer ready for 2024-25, and include:

- [Safeguarding Basic Awareness for Induction \(School Staff\) 2024-25](#)
- [Kent Designated Safeguarding Lead Refresher 2024-25](#)
- [Early Years Designated Safeguarding Lead Refresher 2024-25](#)
- [Safeguarding Record Keeping for Designated Safeguarding Leads](#)
- [Strategic Safeguarding for Governors 2024-25](#)
- [Safeguarding Basic Awareness for Childminders 2024-25](#)
- [Online Safeguarding for Early Years DSLs and Managers 2024-25](#)
- [Online Safeguarding for Early Years Practitioners 2024-25](#)

For any queries relating to our core or bespoke training offer, please contact our [Training and Development Manager](#) or use our [LESAS enquiry form](#).

### Children's Media Use and Attitudes Research 2025

Ofcom have published their [latest report](#) that looks at media use, attitudes and understanding among children aged 3-17 across the UK. This research is updated annually to provide evidence of children's media literacy and online experiences.

Some of the key findings from this year:

- More very young children are getting their own mobile phone: one in five (19%) 3-5s and nearly a third (30%) of 6-7s now have their own device with access to the internet, although younger children are still more commonly use tablets to go online.
- YouTube is still the most-used app or site across all ages and viewing of broadcast TV continues to decline. More children are watching livestreamed videos, and 16% of 3-17s create their own livestream video content online.
- There has been a significant increase in younger children using social media platforms: 37% of 3-5-year-olds use social media, with 60% of these having their own profile. 57% of 8-9s and -year-olds use social media, and 69% have their own profile.
- A quarter of 3-5s (25%), 41% of 6-7s, 63% of 8-9s and over 75% of 10-17-year-olds, game online: three in ten children who game online play against people they don't personally know and chat to strangers while playing.

### Social media use in adolescents with and without mental health conditions

The University of Oxford has published [a new study](#) on social media use and child mental health in the UK. Researchers found that adolescents with diagnosable mental health conditions use social media differently than their peers; young people with anxiety and depression were more likely to report comparing themselves to others on social media, feeling a lack of self-control over time spent on the platforms, as well as changes in mood due to the likes and comments received.

This report doesn't establish a causal link, but confirms that some mental health conditions may shape the way adolescents interact with online platforms, or that social media use may contribute to their symptoms.

See the following links for more advice on supporting [vulnerable children in a digital world](#) and changing our approaches to [empower vulnerable children](#) online.

### Online Safety Competitions

Internet Matters are inviting pupils aged 9-11 to take part in a [competition to create a new Digital Matters Online Safety Champion](#). The winning design will be turned into a virtual character featuring in a new online safety lesson, launching in September 2025, and the winning designer will win up to £7,500 for their school.

There is also still time to enter [Childnet's annual film competition](#) and win filmmaking prizes for your school. Pupils aged 7-18 are encouraged to create a 2-minute-long film on the theme of: "It's not your fault." Exploring how young people can support each other against online scams.

### Children and Violence

The [Youth Endowment Fund](#) has published [new guidance](#) to help prevent children's involvement in violence in England and Wales. The [report](#) discusses the prevalence of violence in education settings and the vital role our education system plays in protecting children:

- **Education settings can provide safe, trusted spaces for children.** Last year, 82% of 13–17-year-olds across England and Wales said they felt safe at school, while only 5% believed school to be unsafe.
- **Education settings can offer evidence-based support to reduce children's involvement in violence.** Where resources are available, these settings can offer mentoring, sports, social and emotional skills development, relationship violence prevention activities and more. These activities can help keep children safe from violence.
- **Education settings safeguard children by identifying problems, providing support and signposting to specialist help.** As the one service that all children should interact with, they are well-placed to notice issues early and provide well-informed responses

### NSPCC London and South East Hub Open Day 2025

NSPCC is hosting an [Open Day for professionals, on Tuesday 10<sup>th</sup> June](#), to find out more about how we can work together to protect children and support families across London and South East.

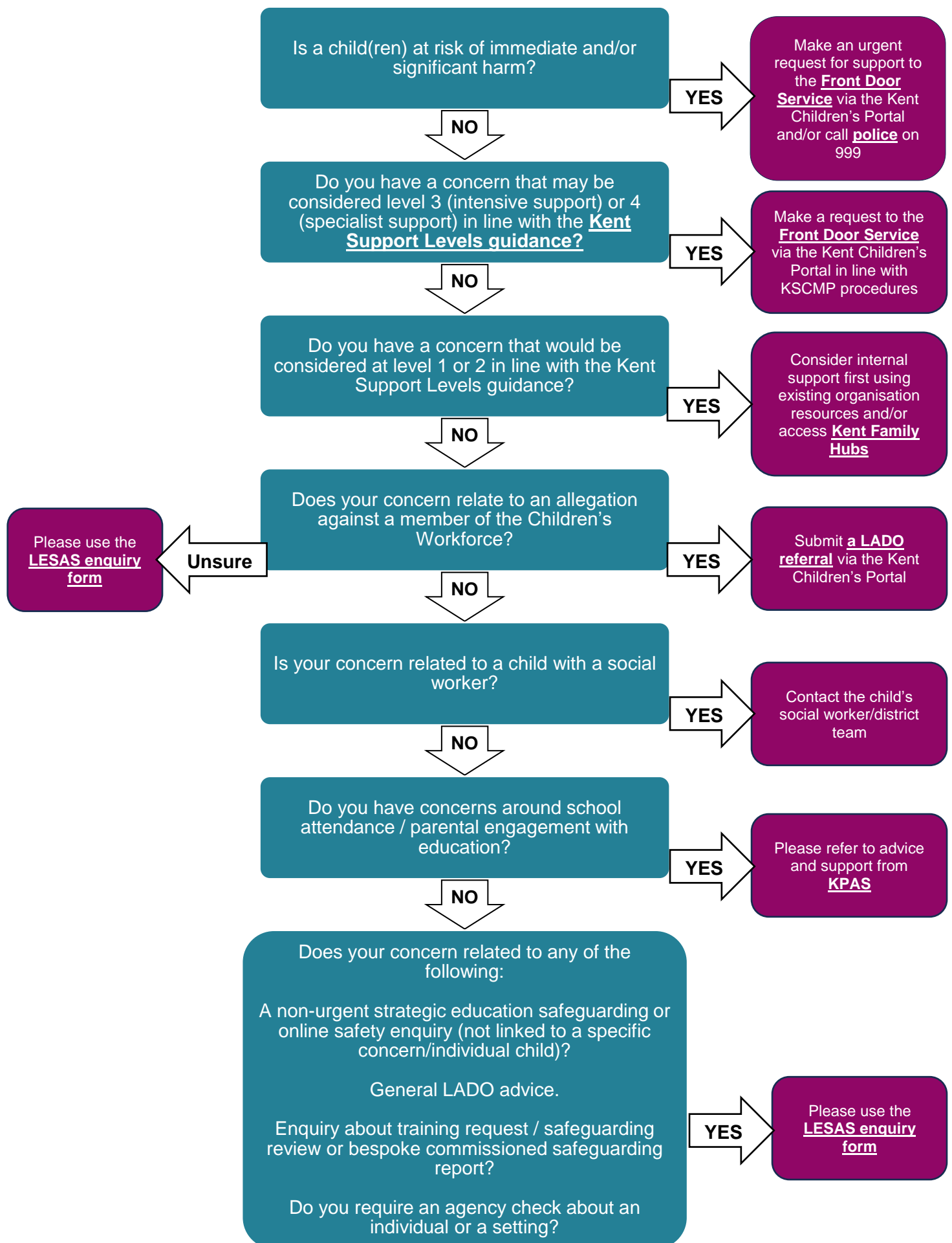
If you're a senior leader, decision-maker, practitioner or educator in children's services, education, healthcare, police or the voluntary sector, this event may be of interest to you.

### Free PSHE resources for schools from Kent Police

Kent Police and The Kent and Medway Violence Reduction Unit (VRU) have funded access to [Pol-Ed PSHE resources](#), free for all Kent and Medway schools.

Pol-Ed offers a range of lessons, assemblies and resources, written by PSHE specialist teachers, mapped against the PSHE Association objectives and quality assured by West Yorkshire Police. [Sign up](#) to access the resources, or for more information, [register for the launch event](#).

## Local Support and Contacts



## Urgent Concerns and Making a Request for Support

If a child may be at risk of **imminent harm**, submit an **urgent request for support** via [the Kent Integrated Children's Services portal](#) or call **Kent Police on 999**

If your concerns may be considered level 3 (intensive support) or 4 (specialist support) in line with the [Kent Support Levels Guidance](#), submit a request for support to the Front Door Service via [the Kent Integrated Children's Services portal](#)

To request a consultation with a social worker from the Front Door Service, call 03000 411 111

If you need to make contact out of working hours, please call the Out of Hours Services via 03000 41 91 91

**Early Help Unit Contacts** can be found at [Early Help and Preventative Services](#)

**Kent Family Hubs Information** can be found at [Kent Family Hubs](#)

## LADO Education Safeguarding Advisory Service

If you need to make a referral to the LADO regarding an allegation against a member of staff, please complete a LADO referral via [the Kent Integrated Children's Services portal](#)

**LADO or Strategic Education Safeguarding/Online Safety Enquiries**

[LESAS enquiry form](#)

## Assistant Director of Education

**South Kent** – David Adams 03000 412 309

**East Kent** – Rob Veale 03000 418 794

**West Kent** – Nick Abrahams 03000 410 058

**North Kent** – Ian Watts 03000 414 302

## Prevent Education Officers

**North/West/ Medway** - Sally Green [sally.green2@kent.gov.uk](mailto:sally.green2@kent.gov.uk) 03000 413 439

**South/East** - Rachel Murray [Rachel.murray@kent.gov.uk](mailto:Rachel.murray@kent.gov.uk) 03000 412 431