

LADO Education Safeguarding Advisory Service Child Protection Newsletter

2024-25: Term 4

Welcome

Welcome to the 4th Child Protection Newsletter for the 2024-25 academic year. We hope that the following articles and information we share will be useful for you.

This newsletter is published by the LADO Education Safeguarding Advisory Service and issued to schools, early years providers and local authority staff.

This newsletter aims to help DSLs keep up to date with key local and national safeguarding guidance and procedures, to support them in carrying out their role.

For this newsletter to be effective, please ensure that it is shared with all Designated Safeguarding Leads in your organisation and other staff as appropriate. DSLs may also wish to extract and share content with their wider staff group as part of providing at least annual safeguarding updates.

We include links to external websites in our articles; we try and provide useful resources but cannot be responsible for their content and advice and some information/events are time limited so may have expired.

IN THIS ISSUE

- [Welcome](#)
- [National Safeguarding Updates](#)
- [Local Safeguarding Updates](#)
- [Core Safeguarding Training for DSLs](#)
- [Online Safety](#)
- [Local Support and Contacts](#)

**KENT LADO EDUCATION
SAFEGUARDING
ADVISORY SERVICE**
KEEPING CHILDREN SAFE IN
THE CHILDREN'S WORKFORCE

National Safeguarding Updates



Subscribe to the [NSPCC Safeguarding in Education Update](#) to receive monthly education practice, policy and research updates, via email, with all the latest education safeguarding and child protection news.

Local Safeguarding updates



Kent Safeguarding Children
multi-agency partnership

FATHER INCLUSIVE PRACTICE

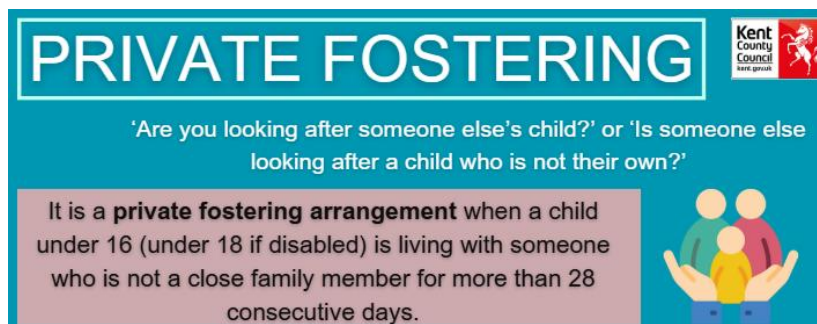
KCSMP have shared the following documents regarding Father Inclusive Practice to remind professionals of the importance of being curious and engaging fathers when working with children:

- [Father Inclusive Guidance - Kent Safeguarding Children Multi-Agency Partnership](#)
- [Kent-Father-Inclusive-Guidance-FINAL-Nov-2023.pdf](#)
- [Kent-Father-inclusive-one-minute-guide.pdf](#)
- [Father-inclusive-engagement-checklist.pdf](#)

PRIVATE FOSTERING

Reminder that the Local Authority should be notified of private fostering arrangements. For more information, see: [Focus on Private Fostering](#)

Schools and settings may wish to display this poster in their staff room or reception area: [Private Fostering Awareness Poster](#)



KENT & MEDWAY SPECIALIST BEREAVEMENT SUPPORT SERVICE



[CHUMS](#) offer specialist bereavement support to children and young people aged between 3.5 years to 25 years in Kent and Medway. Support will provide evidence-based interventions experienced, trained professionals and volunteers through 1:1, group and drop-in sessions, face-to-face and/or virtually.

Professionals wishing to refer a child can do so [here](#) and must have consent from the child, young person and/or parents/carers.

FREE KOOTH TRAINING WEBINARS

Kooth is a free, anonymous space for young people struggling with their mental health, wellbeing, and the pressure of day-to-day life, to access online support and counselling. These FREE, 30 minute webinars are designed for all professionals, to gain an insight into the service and how it can be used to support young people in Kent & Medway.



Wednesday 9th April: 10:00-10:30

Wednesday 16th April: 13:00-13:30

Thursday 24th April: 16:30-17:00

KENT & MEDWAY CHILDREN & YOUNG PEOPLE SUICIDE PREVENTION NETWORK

The Kent & Medway Children & Young People Suicide Prevention Network meeting is an opportunity for people across Kent and Medway to share best practice, hear from speakers, and look at local data & evidence; scheduled meetings for 2025 are:

- 3rd April 10-12pm
- 3rd July 10-12pm
- 2nd October 10-12pm

Please contact suicideprevention@kent.gov.uk if you would like to sign up.



Children in Kent, aged 4 to 16 years, who receive benefits-related free school meals (FSM), have a Social Worker, Early Help worker or are known to a Family Hub Worker, can access the HAF Programme which provides healthy, nutritious food and enriching activities for children during the school holidays.

All eligible families will be issued an electronic eVoucher from **12 March 2025**. These can be used by the families to find a local HAF Programme and request a place. More information is available on the [HAF Programme website](#).

If a school is interested in being a HAF Programme partner and offering a funded holiday club for their children, please email the HAF Programme team at KentHAF@theeducationpeople.org to discuss the application process, funding and support.

Core Safeguarding Training for DSLs

Our training courses for terms three and four of the 24-25 academic year are published on The Education People website:

- [Early years training](#)
- [Schools/colleges training](#)

24/04/2025	New to Role DSL Training	Holiday Inn, Wrotham Heath, TN15 7RS
29/04/2025	New to Role DSL Training	Virtual
01/05/2025	New to Role Early Years (EY) DSL	Howfield Manor, Chartham, CT4 7HQ
06/05/2025	New to Role Early Years (EY) DSL	Virtual
07/05/2025	Early Years DSL Refresher	Mercure Tunbridge Wells, TN2 4QL
08/05/2025	New to Role DSL Training	Singleton Environmental Centre, TN23 5LW
14/05/2025	DSL Refresher Training	Bridgewood Manor Hotel, ME5 9AX
15/05/2025	New to Role DSL Training	Mercure Maidstone Great Danes, ME17 1RE
21/05/2025	DSL Refresher Training	Singleton Env Centre, Ashford, TN23 5LW
04/06/2025	New to Role DSL Training	Mercure Tunbridge Wells, Pembury, TN2 4QL
05/06/2025	DSL Refresher Training	Mercure Maidstone Great Danes, ME17 1RE
10/06/2025	New to Role DSL Training	Virtual
12/06/2025	DSL Refresher Training	Eastgate 141 Springhead Parkway, DA11 8AD
17/06/2025	New to Role Early Years (EY) DSL	Mercure Tunbridge Wells, Pembury, TN2 4QL
18/06/2025	Online Safety for DSL	Bridgewood Manor Hotel, ME5 9AX
19/06/2025	Early Years Basic Awareness	Virtual
24/06/2025	New to Role Early Years (EY) DSL	Virtual
26/06/2025	New to Role DSL Training	Eastgate 141 Springhead Parkway, DA11 8AD
01/07/2025	DSL Refresher Training	Holiday Inn, Wrotham Heath TN15 7RS
02/07/2025	New to Role DSL Training	Kent Invicta, Ashford, TN24 0LH
08/07/2025	Early Years DSL Refresher	Ashford International Hotel, TN24 8X

The service also has a number of [‘on demand’ e-Learning courses available for DSLs and staff](#).

These courses are all based on the most up to date guidance for 2024-25, and include:

- [Safeguarding Basic Awareness for Induction \(School Staff\) 2024-25](#)
- [Kent Designated Safeguarding Lead Refresher 2024-25](#)
- [Early Years Designated Safeguarding Lead Refresher 2024-25](#)
- [Safeguarding Record Keeping for Designated Safeguarding Leads](#)
- [Strategic Safeguarding for Governors 2024-25](#)
- [Safeguarding Basic Awareness for Childminders 2024-25](#)
- [Online Safeguarding for Early Years DSLs and Managers 2024-25](#)
- [Online Safeguarding for Early Years Practitioners 2024-25](#)

For any queries relating to our core or bespoke training offer, please contact our [Training and Development Manager](#) or use our [LESAS enquiry form](#).

ADOLESCENCE AND ONLINE MISOGYNY IN SCHOOLS



With so much in the news and on social media surrounding the Netflix series *Adolescence*, we have seen a rise in anxiety amongst parents/carers and schools regarding children's online safety.

The following resources may be useful for DSLs wanting to understand more about online misogyny, toxic masculinity, and how to address these topics in school:

- [Misogyny in schools - Guidance for teachers | Internet Matters](#)
- [Addressing misogyny, toxic masculinity and social media influence in PSHE education](#)
- [Teaching about Misogyny & Andrew Tate](#)
- [What is misogyny? Guidance for parents and carers | Internet Matters](#)
- [Step Up, Speak Up! | Childnet](#)
- [Incels: A guide for those teaching Year 10 and above - Educate Against Hate](#)
- [Hope not Hate: Andrew Tate briefing](#)

When [handling complex or sensitive issues](#), schools and settings should be mindful that [scare or shock tactics](#) are ineffective and often counter-productive, and can undermine the safe culture within the setting; for this reason, we would not recommend using the Netflix series as a teaching resource at this time. Schools should refer to [using external expertise to enhance online safety education](#) for further guidance.

REMINDER- FREE WEBINARS FROM CYBER CHOICES

Colleagues from the [Eastern Region Special Operations Unit's](#) Cyber Protect and Cyber Choices Team will be delivering their popular **free** staff training and parent awareness webinars at multiple dates throughout the next academic year; see previous newsletter for list of dates and links.



NEW TEACHING RESOURCES

The BBC have updated their [online safety resources for primary schools](#). Each of these collections have been mapped to the Education for a Connected World framework set out by the UK Council for Internet Safety, plus some newer resources published for Safer Internet Day.

ARTIFICIAL INTELLIGENCE (AI) AND EDUCATION

We have also recorded an increase in schools seeking guidance from LESAS around Artificial Intelligence and safer practice with new and emerging technologies.

[The DfE have published guidance](#) which outlines some considerations for education settings wishing to use generative AI safely, effectively and responsibly and KSCMP have put together a factsheet on [Artificial Intelligence \(AI\) technology and potential safeguarding risks to children](#) which may support your risk assessments and decision making. [SWGfL](#) have produced a [Policy Template](#) for schools and settings wishing to integrate AI into their school systems.

[LGFL](#) have created two new video training sessions for staff and parents to help them understand more about **Gen AI (generative artificial intelligence)** and the **latest online harms children may be exposed to through new and emerging technologies**.

- [VIDEO 1](#)- information on the latest harms landscape for teachers and parents
- [VIDEO 2](#)- a 'Part 2' training follow-up session for school staff to explore the latest DfE guidelines, approaches and discussion questions for a meeting or inset.

[Childnet International](#) have created a set of [staff training slides](#) to provide teachers and other professionals an opportunity to reflect on recent developments in generative AI (genAI), and a [leaflet with information for parents and carers](#). Whilst the PSHE association have resources for [teaching pupils about AI](#).



GUIDANCE TO SUPPORT SCHOOL PUPIL/ STUDENT IMAGE SECURITY

[The UK Safer Internet Centre](#) have produced [new guidance](#) to support schools and education settings manage image and video content on online platforms such as websites and/or social media presence. This guidance also includes an Example Risk Management Template which schools/settings may find useful to document their online safety approaches and decision making.

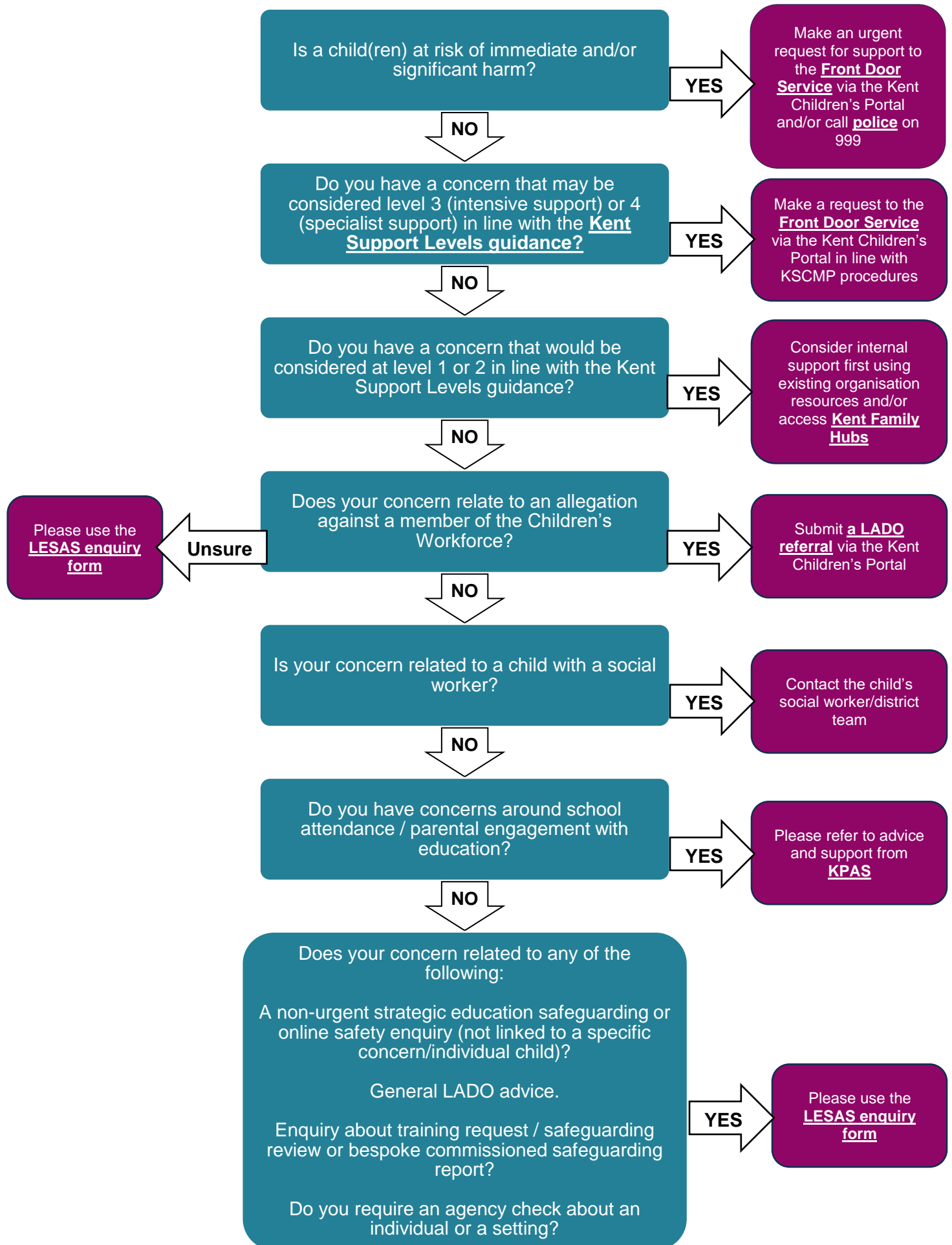
Schools and settings with an official social media presence may also wish to access the [Social Media Policy Toolkit](#) from LESAS which includes guidance and FAQs to help school leaders make informed and appropriate choices about using social media tools.

Online Safety from the NSPCC

NSPCC Learning has published a new podcast episode exploring young people's perspectives of online safety. The podcast features a discussion with children from the NSPCC's Voice of Online Youth group, covering: the positive uses of online technology; the importance of content moderation; concerns around misinformation; and the impact of Generative artificial intelligence (Gen AI).

- Listen to the podcast on NSPCC Learning: [Online safety - a young person's perspective](#)
- Listen on YouTube: [Online safety – a young person's perspective](#)

Local Support and Contacts



Urgent Concerns and Making a Request for Support

If a child may be at risk of **imminent harm**, submit an **urgent request for support** via [the Kent Integrated Children's Services portal](#) or call **Kent Police on 999**

If your concerns may be considered level 3 (intensive support) or 4 (specialist support) in line with the [Kent Support Levels Guidance](#), submit a request for support to the Front Door Service via [the Kent Integrated Children's Services portal](#)

To request a consultation with a social worker from the Front Door Service, call 03000 411 111

If you need to make contact out of working hours, please call the Out of Hours Services via 03000 41 91 91

Early Help Unit Contacts can be found at [Early Help and Preventative Services](#)

Kent Family Hubs Information can be found at [Kent Family Hubs](#)

LADO Education Safeguarding Advisory Service

If you need to make a referral to the LADO regarding an allegation against a member of staff, please complete a LADO referral via [the Kent Integrated Children's Services portal](#)

LADO or Strategic Education Safeguarding/Online Safety Enquiries

[LESAS enquiry form](#)

Assistant Director of Education

South Kent – David Adams 03000 412 309

East Kent – Rob Veale 03000 418 794

West Kent – Nick Abrahams 03000 410 058

North Kent – Ian Watts 03000 414 302

Prevent Education Officers

North/West/ Medway - Sally Green sally.green2@kent.gov.uk 03000 413 439

South/East - Rachel Murray Rachel.murray@kent.gov.uk 03000 412 431