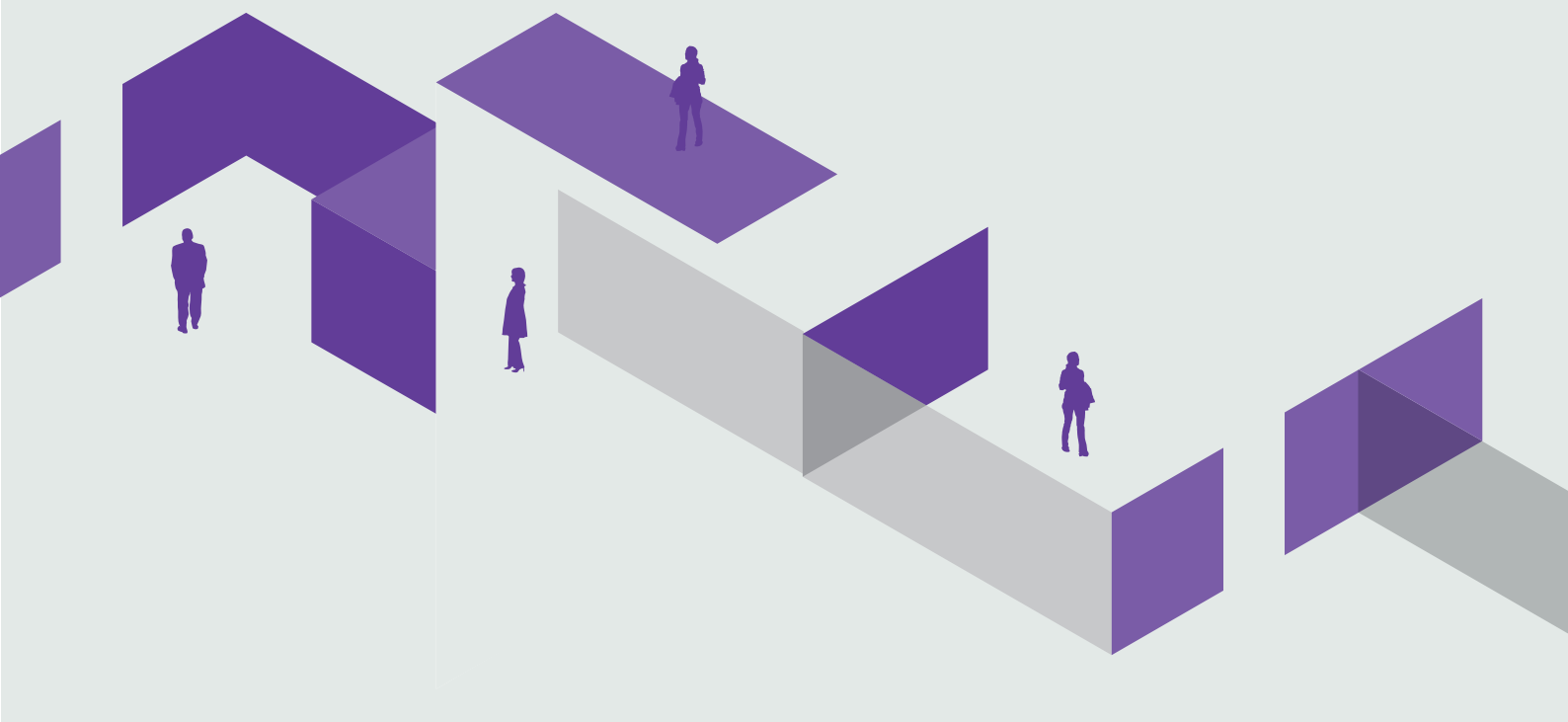


School Improvement Services

Making a difference

We improve the quality of teaching and learning in schools and have a proven track record of improving standards from NQT onwards

Service Level Agreement from September 2018



THE EDUCATION
PEOPLE

Contacts:

schoolimprovementsla@theeducationpeople.org

Jayne Bartholomew:

jayne.bartholomew@theeducationpeople.org

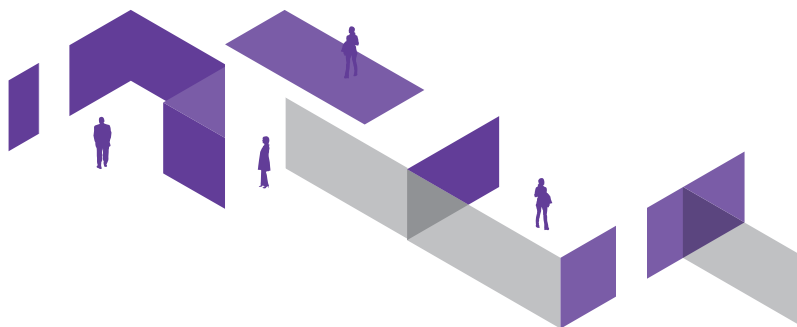
03000 415820

Kat Bellinger:

kathryn.bellinger@theeducationpeople.org

03000 415840

School Improvement Services



Dear Headteacher and Chair of Governors

We are committed to supporting schools and delighted to present our School Improvement Services Brochure for 2018-19. Here you will find details of professional development support which complements the core programme of visits delivered by experienced improvement advisers and the wide range of traded services we provide. Everything in this brochure can be tailored to your needs.

Our team of educational specialists has invaluable experience, skills and expertise that can help you meet your school's goals.

The professional development support in this document draws on best practice from local and national initiatives and is delivered by our school improvement team and external providers. We offer access to expertise, guidance and high quality training. We build on our strong record of achievement in Kent to support the growth of schools, teachers and leaders.

The school improvement service provides a range of training and support for school leaders at all stages of their careers. You will also find something here for teachers and support staff which focus on enhancing aspects of quality first teaching, developing innovative practice and becoming outstanding. We pride ourselves on providing quality support to schools in their development which impacts on practice.

In addition to the services offered here, we regularly update our online resources for sale through The Education People and will be looking to providing even more digital services including online training in the future.

Please take time to browse through the brochure or alternatively you can download a copy from the following website: schoolimprovementsla.kent.gov.uk. Our advisers will be pleased to discuss your needs and help you find the product and service that is right for your school.

You will also find our CPD packages offer fantastic value. As well as the SLA available for Primary schools, there is a pay as you go option on all our services for Primary, Secondary and Special.

To book bespoke support please contact the team on 03000 415820 / 03000 415840 or email schoolimprovementsla@theeducationpeople.org.

We believe there is something for everyone here and look forward to welcoming you and your colleagues.

Best wishes

The Education People

The School Improvement Support Offer from September 2018

Kent County Council and schools have a strong track record of partnership working to improve educational outcomes, and our continued successes in this respect are a clear testament. We are a county with rapid improvement, sustained achievement and innovation across a range of education activities.

The role of the Council continues to focus on developing a strong local educational system through support, challenge and collaborative work towards our shared ambition of providing the highest standards of education in Kent.

The Local Authority is committed to continue to fund core improvement support for all maintained schools in our county free of charge, as part of our statutory responsibility to ensure we achieve good educational outcomes for all children and young people. The core offer will be delivered on behalf of Kent County Council through The Education People.

Every maintained school will be offered support through links with an experienced Improvement Adviser (IA) or Improvement Consultant (IC). Our team has a proven track record of success. Schools will receive an allocated number of visits which are non-chargeable. The visit allocation is determined by inspection outcomes, analysis of school performance data and each school's capacity to drive forward improvement and agreed in discussion with Headteachers. Senior Advisers will keep in touch with stand-alone academies and academy trusts.

Good and outstanding Local Authority maintained schools will receive 2 funded visits from the school improvement team. Maintained schools that require improvement receive 3 visits and 8 visits are allocated to schools that require more intensive support across the academic year. Visits include advice and support for monitoring teaching and learning, reviews of school data and pupil progress, reviewing school self-evaluation, support for Ofsted preparation and the brokering of support for school improvement priorities.

It will also include providing support and guidance to governing bodies for the Headteacher recruitment process in all maintained schools.

Our services have been developed with these needs in mind. Take a look through this brochure to see how we might be able to work with you in taking your school forward. If you cannot find the service you require, please contact us and we will do our best to find a solution to your challenge.

Headteacher recruitment

KCC School Improvement is committed to supporting schools with the recruitment of new Headteachers. We will continue to fund the core aspects of the process until recruitment is complete. The funded provision is outlined below:

KCC support for Headteacher recruitment in Kent schools will be a maximum of 3 days split in the following way –

Meeting with the appointment panel (only necessary for the first round)		half day
Shortlisting – to include meetings		half day
Interviewing	two candidates	one day only
	three or more candidates	two days only

Kent schools are welcome to purchase additional support at a cost of £600/day (12 credits) and £300/half day (6 credits) for –

- Attending the full governing body meeting prior to the first appointment panel meeting
- Giving feedback to unsuccessful candidates
- Ratification meeting
- Any other support required

Academies are welcome to purchase all or part of this offer at £600/day (12 credits) and £300/ half day (6 credits).

Please call the SLA team to discuss your requirements - 03000 415820

The SLA Entitlement

All schools that purchase the SLA will have access to the following:

Primary, Special and PRU offer

Basic Package - This package offers:

- FFT Aspire
- AEN update meetings
- Curriculum network meetings for Maths
- Curriculum network meetings for English
- NQT induction training 6 x ½ day sessions for one NQT
- NQT induction for two NQTs
- Access to KCC's School Improvement Framework for commissioning external consultants
- Access to the Bristol Summary documents

(Schools with more than two NQTs can pay for additional NQTs with credits or by invoice)

The SLA can be enhanced by adding a number of credits which can be used for a range of additional school improvement support and training opportunities.

Primary schools can buy further bundles of credits should they wish to top up. Credits can be spent on training courses, conference places, bespoke support and training or school support as outlined on the service menus.

Secondary Offer

There are no SLA packages for secondary schools, however, secondary schools are able to purchase support on a 'pay as you go' basis. The daily rates are outlined on the menus in the school improvement brochure. This support is flexible and bespoke to the school. Please contact your Senior Improvement Adviser to discuss the support in the first instance.

Additional Credits

Additional credits can be purchased by schools who buy the SLA. These additional credits will be offered at a flat rate price to provide more bespoke school improvement services for schools.

If you have any questions related to ordering or booking please contact –

schoolimprovementsla@theeducationpeople.org

Introduction to the Menus

The following pages relate to menus that reflect the different services within School Improvement Schools can choose particular services from any of the menus to spend the credits they have been allocated within the SLA.

There are also charges displayed for those schools that do not wish to purchase the SLA but may want to buy a service from the Local Authority.

This can be done by request by emailing schoolimprovementsla@theeducationpeople.org

If there are any aspects that schools wish to purchase or spend their credits on but they do not appear on these menu please contact us and we will be able to negotiate the work and the number of credits/charge required.

If you have any questions related to the SLA please email: schoolimprovementsla@theeducationpeople.org

1.	Early Years	8
2.	Primary School Improvement support additional to the core offer	10
3.	Secondary, Special and PRU school improvement support	15
4.	Assessment and Moderation	23
5.	Governor Services	24
6.	Safeguarding	26
7.	Management Information	27
8.	Inclusion Support Service Kent – ISSK	28
9.	NQT Induction and Support	35
10.	Horton Kirby – Primary Science Support	37
11.	Literacy and Numeracy	38
12.	The Outdoor Education Unit Training and Support	39
13.	PE Support	41
14.	CPD information	42

Menu for Service Level Agreement with Schools

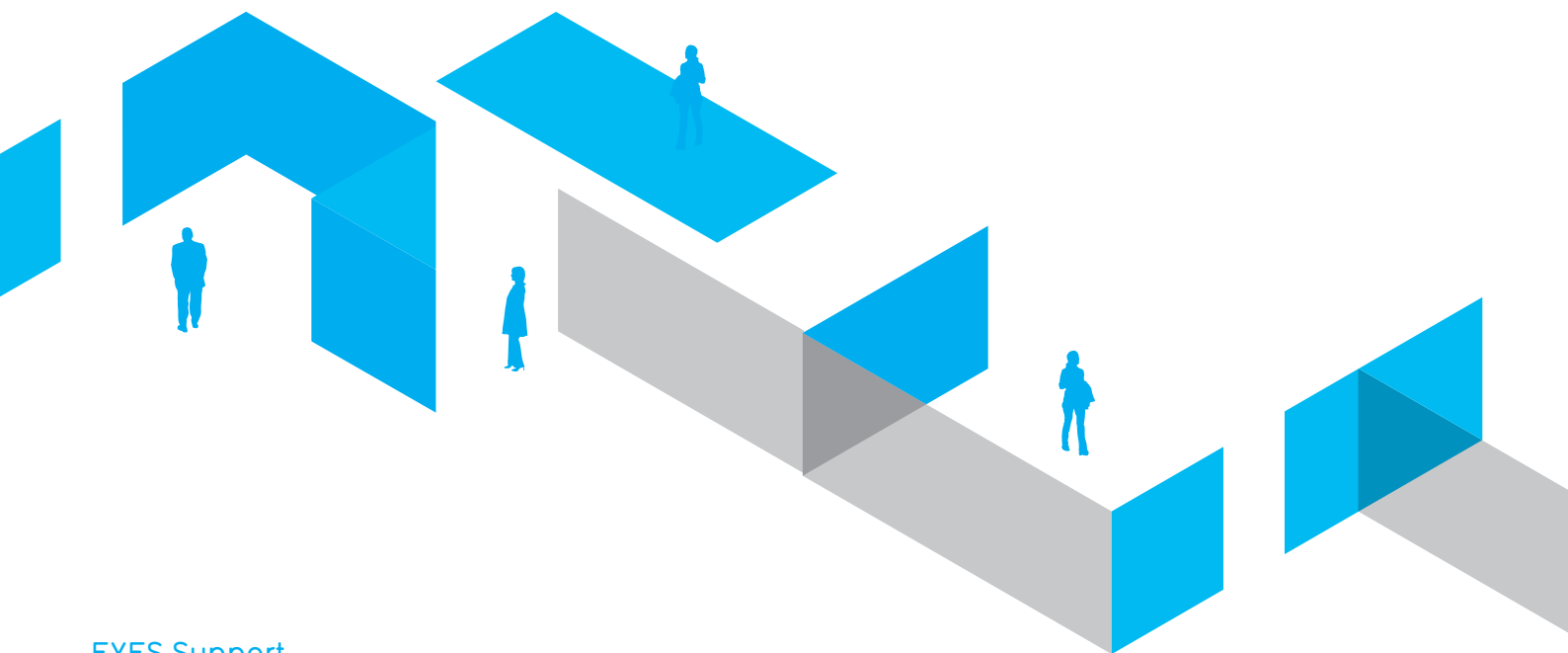
EYFS Support

The Early Years Foundation Stage part of School Improvement, promotes high quality outcomes and provision for all children in Maintained Nursery, Reception and Year 1 classes.

The highly experienced and knowledgeable advisers offer expertise with bespoke training, support, encouragement and challenge to enable Headteachers, Senior Leadership teams and teachers working in the Early Years Foundation Stage to improve all aspects of quality and provision, and therefore provide better experiences and learning opportunities for all children.

EYFS Support

Data analysis	1 x half day
Developing tracking processes	1 x half day
Tracking for individual pupils / vulnerable groups addressing acceleration of progress for individuals / groups	1 x half day
Audit of development of prime and specific areas of learning	1 x half day
Analysis of and response to pupil behaviour in lessons	1 x half day
Evaluating strategies to improve behaviour and attendance and age appropriate expectations of behaviour	1 x half day
Support to prevent exclusions in EYFS classes	1 x half day
Managing behaviour and conflict resolution techniques	1 x half day
Curriculum review and development: <ul style="list-style-type: none">• Joint observations with Senior Leaders• Observations assessment and planning• Whole School Improvement Planning	1 x full day
Understanding of assessment in EYs including all formative and summative tools available including the statutory assessment (Profile)	1 x half day
Support recruitment of EYFS Teachers	1 x half day
Supporting leadership in: capability / performance issues	1 x half day
Support and advice linked with whole school improvement plan	1 x half day
Phonics in EYFS	1 x half day



EYFS Support

Ofsted readiness	1 x full day
LA Teaching and Learning Reviews	1 x full day
Role of adults in supporting learning including TA	1 x half day
Lesson observations to validate judgements	1 x half day
Support to improve quality of teaching Consistently good to outstanding	1 x half day
Observation Assessment and Planning	1 x half day
Environment to optimise learning – indoor and out • Age appropriate environments and resources • A challenging environment	1 x half day
Interaction and climate for learning	1 x half day
Mixed age EYFS / KS1 good practice	1 x half day
Transition from pre-school setting	1 x half day
Transition into Year 1	1 x half day
Support for NQT / New to EYFS Teachers and additional classes (increase on roll)	1 x half day
Supporting and providing for 2 year olds	1 x half day
Developing the environment both inside and outside	1 x half day
Supporting and developing Teaching Assistants working in EYFS classrooms	1 x half day
Supporting whole Governing bodies and that of the EYFS Governor in their role	1 x half day

Menu for Service Level Agreement with Schools

Primary Support

Schools at all stages of their ongoing improvement journey need to ensure they have an external view of their progress and performance. The Local Authority offers a range of high quality school improvement support for governors, leaders and teaching staff to reflect the changing educational landscape, alongside our bespoke training which can be closely matched and adapted to schools' improvement priorities.

Quality of Leadership and Management

Developing whole school values and vision

- Staff
- Governors
- Pupils and parents

1 x full day

Support with the development of school improvement plan

- Priorities
- Success criteria and milestones
- Actions and timescale
- Monitoring and evaluation

1 x half day

Support with development of a robust school SEF

- Evaluation matched to the Ofsted grade descriptors
- Linking SEF to school planning

1 x half day

Critical evaluation of SEF and school improvement plan:

- Are priorities appropriate?
- Is the SIP fit for purpose?

1 x full day

Strategic leadership of teaching and learning including

- How you develop a whole school policy of expectations and support
- What good learning should look like
- Management systems to monitor and challenge

1 x full day

Strategic leadership of the curriculum

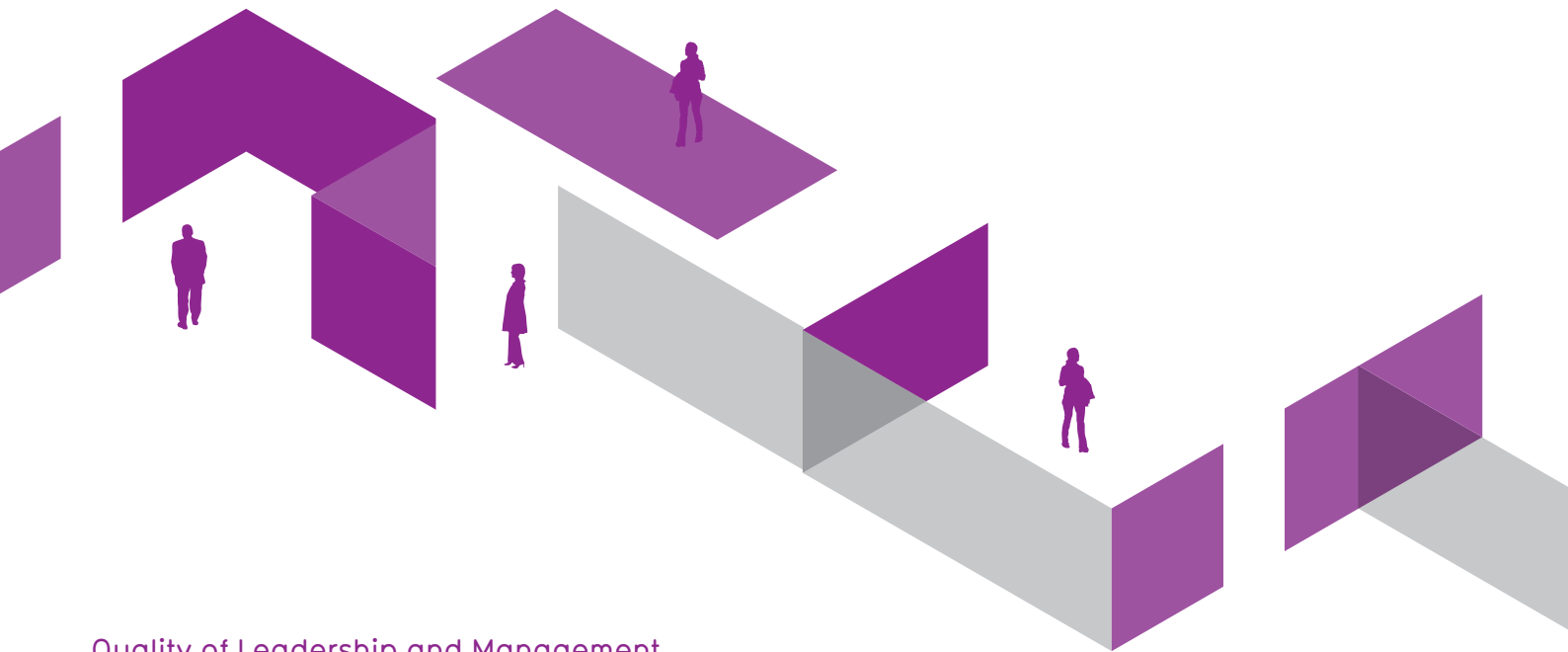
- What curriculum is right for your pupils?
- How to support staff to develop a whole school curriculum map

1 x full day

Leadership in a small school – getting the most from your team

- Roles and responsibilities
- Curriculum planning
- Monitoring and evaluation

1 x full day



Quality of Leadership and Management

Developing middle leaders

- Use of data
- Planning and work scrutiny
- Lesson observations
- Action planning and reporting to external audiences

1 x half day

Developing subject leaders

- Expectations of a subject leader
- Standards and achievement in your subject
- Subject action plans, monitoring and evaluation of impact

1 x half day

Support with key staff appointments e.g. Deputy / Assistant Headteacher

1 x full day

Developing effective monitoring systems

- Lesson observations
- Work and planning scrutiny
- In school tracking
- Pupil voice

1 x half day

- Ease of booking - 'quick response to email request'
- Communication with designated adviser - 'quick response to email request'

Sarah Merritt, Deputy Headteacher
Castle Hill Community Primary School

Menu for Service Level Agreement with Schools

Primary Support



Achievement

Understanding and presenting your performance data for a range of audiences

- Ofsted
- Governors
- Parents

1 x half day

Using data to raise standards

- Pupil progress meetings
- Appraisal
- Pupil target setting

1 x half day

Review of Pupil Premium on achievement

- School tracking of pupil premium
- Use and impact of pupil premium
- Website reporting

1 x half day

Achievement and progress in the EYFS and KS1

- Ofsted expectations
- Measuring progress from EYFS to KS1

1 x half day

Effective pupil progress meetings – developing a robust model

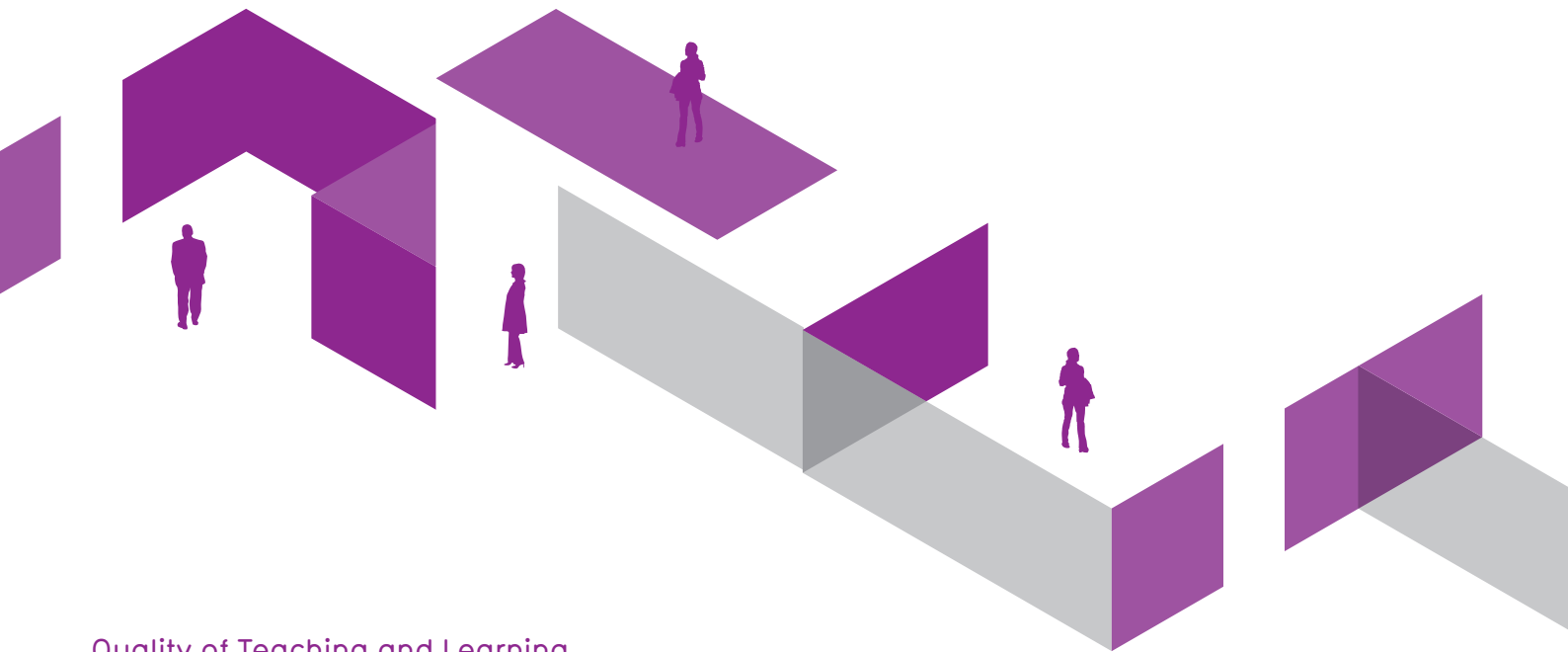
- Format / structure
- Evaluation of individual progress
- Planning future support
- Modelling good practice

1 x full day

Use of classroom data to inform planning

- Planning for low / middle / high ability
- Deployment of additional adults
- Intervention programmes
- Tracking progress

1 x half day



Quality of Teaching and Learning

Improving teaching and learning

- Expectations - What does outstanding look like?
- Key elements for an effective lesson
- Developing a robust policy

1 x half day

Challenge for the most able

- Identification
- Provision
- Developing Policy
- Evaluation of impact

1 x half day

Supported review of teaching and learning

- Validation of triangulated judgements
- Joint lesson observations
 - Supported work and planning scrutiny
 - Current data

1 x full day

Effective questioning

- Use of questions to reshape tasks and explanations to improve learning

1 x twilight

Using the outside environment to support learning

1 x twilight

Effective use of homework

1 x twilight

Menu for Service Level Agreement with Schools

Primary Support



Bespoke packages for schools

Bespoke support for effective staff restructuring	1 x half day
Bespoke support for building / rebuilding an SLT to drive school improvement	1 x half day
Bespoke training for schools / collaborations for the development of Ofsted readiness with middle and subject leaders	1 x half day
Post Ofsted support with the development of an Action Plan	1 x half day
In school coaching and mentoring support for an individual teacher	1 x half day
Beyond outstanding – Inset days	1 x half day 1 x full day
Good to outstanding – Inset days	1 x half day 1 x full day
Pre-Ofsted review – days and cost will be tailored to school and size of team	1 x full day
Headteacher appraisal	1 x full day
Headteacher appraisal plus 3 SIP visits (academies)	1 x full day
Bespoke twilight training*	1 x twilight

*additional cost of resources/planning time dependent on the number of delegates – price given on booking.

Menu for Service Level Agreement with Schools

Secondary, Special and PRU, Skills and Employability

Our team of Senior Advisers provide an extensive range of Secondary, Special and PRU experience and knowledge. A selection of the packages that we offer are included in this brochure, these provide opportunities for review, evaluation and action planning. This is not an exhaustive list and our Senior Improvement Advisers can also offer a range of bespoke packages designed to support school improvement plans; we can develop training approaches, in collaboration with school leaders, to support your specific school improvement agenda. We can design a menu of bespoke school improvement activities which can be tailored to fit your specific context and improve teaching, learning, leadership and management. Our team of advisers can support sustainable leadership development at all levels, these could include coaching, mentoring and modelling for new and aspiring senior and middle leaders. Please contact your school's Senior Improvement Adviser to discuss your specific requirements.

Quality of Leadership and Management

Developing middle leaders and subject leaders

- Is this a key issue from your last inspection?
- Do you need to strengthen this area of leadership?

Tailored support to review JDs and current deployment, rehearse middle leaders with an 'inspector conversation' to determine how capably they can speak to their area of leadership and provide individual support to improve effectiveness of their role

1 x full day

A critical evaluation of school SEF, website and action plans – desktop

Do you need a fresh pair of external eyes to look at your SEF?

A review of your SEF and action plan to reflect back to the school what impression it will give when the school is undergoing external scrutiny

1 x full day

School self-review and action plan negotiable after assessment – on-site

Is more extensive support required following the 'critical evaluation' above?

Tailored support to ensure that SEF, website and action plan give the correct impression and information

1 x full day

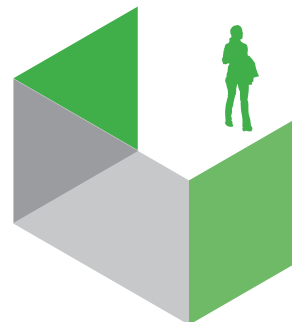
SIA attendance at Governing Body / Management Committee meeting

Do you need external validation about the correct functioning of the GB / MC?

Attendance at a GB / MC meeting to observe the GB / MC at work and to report back on the appropriateness of the support and challenge provided by them

1 x half day

Menu for Service Level Agreement with Schools Secondary, Special and PRU, Skills and Employability



Quality of Leadership and Management

Support for financial recovery plans and restructuring

Is your school facing a deficit recovery situation?
Do you need support with a restructure of staffing to avoid deficit?

This work will be undertaken in conjunction with Finance (LA schools) and will include an analysis of the curriculum delivery model and the accreditation pathways provided

2 x full day

Moving from good to outstanding

Are you wondering how to move your school from good to outstanding?

Asking the critical questions at all levels in the school and helping you to develop an action plan

Bespoke full day

Effective use of budget for school improvement

Can you answer the question 'How much do you invest in your own improvement beyond CPD?'

We will look at your current expenditure as a starting point for a discussion about whether it is sufficient and having the impact required
NB 1% - 2.5% of total budget is a useful benchmark for this

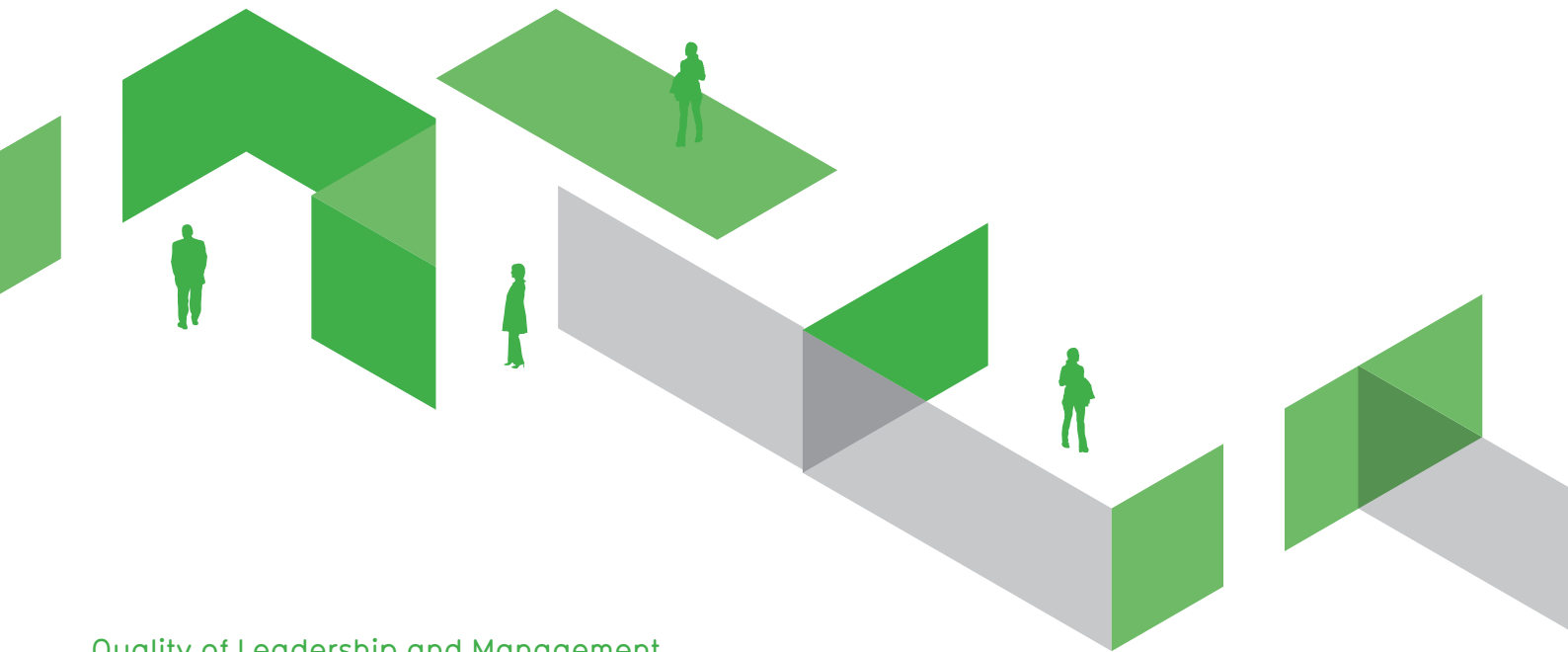
1 x full day

Developing a robust pupil tracking system

Are you confident about the pupil tracking system your school uses, particularly now that this evidence can out-weigh 3 year attainment evidence?

We will review the pupil progress tracking system you use and scrutinise the reliability of it and the use made of it by staff in composing interventions to help students to catch-up

1 x full day



Quality of Leadership and Management

Ad hoc request

Is there a leadership and management issue with which you would like support but is not mentioned above?

Please speak to your SIA about an ad hoc request

Bespoke full day

Appointment support for middle / senior leaders

Are you about to make a crucially important appointment for a middle or senior leader?

This will depend on the extent of our involvement but could include composition of the JD, planning for the interview, shortlisting, attendance on interview panel

Bespoke full day

Teaching and Learning – working with middle / senior leaders – secondary

Do you need to support your middle or senior leaders to make accurate judgements about quality of teaching?

We will provide initial training on how to conduct a lesson observation using Ofsted criteria and undertake a joint lesson observation to validate their judgement making

1 x half day

Support for developing ‘intervention offer’

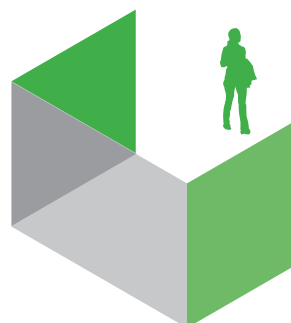
Are you uncertain that you have the appropriate ‘intervention offer’ in your school to support the students who need to ‘catch-up’ and who need more long term support for their SEN? Are you wishing to provide interventions that have more impact using your pupil premium and catch-up premium funding?

We will review the programmes you currently use. We will provide advice about alternatives which have a track record of success

2 x full day

Menu for Service Level Agreement with Schools

Secondary, Special and PRU, Skills and Employability



Quality of Leadership and Management

Evaluation of the impact of the 'intervention offer'

Do you know what impact the interventions you offer are having on students' achievement?

We review your current practice on evaluation and support you to improve this important aspect of school improvement

1 x half day

Improving a department – secondary

Audit, action, evaluation

Do you have a department that you are concerned about due to poor student outcomes or because you have a newly appointed Head of Department?

We will review the current effectiveness of the department and provide advice about changes that will lead to improvements

3 x full day

Post 16 – developing T&L strategies for post 16 delivery

Audit, action, evaluation

Do you have concerns about your sixth form due to poor student outcomes or because you have newly appointed Head of Department / Head of Sixth Form

We will review the current effectiveness of the sixth form in conjunction with the skills and employability team and provide advice about changes that will lead to improvements

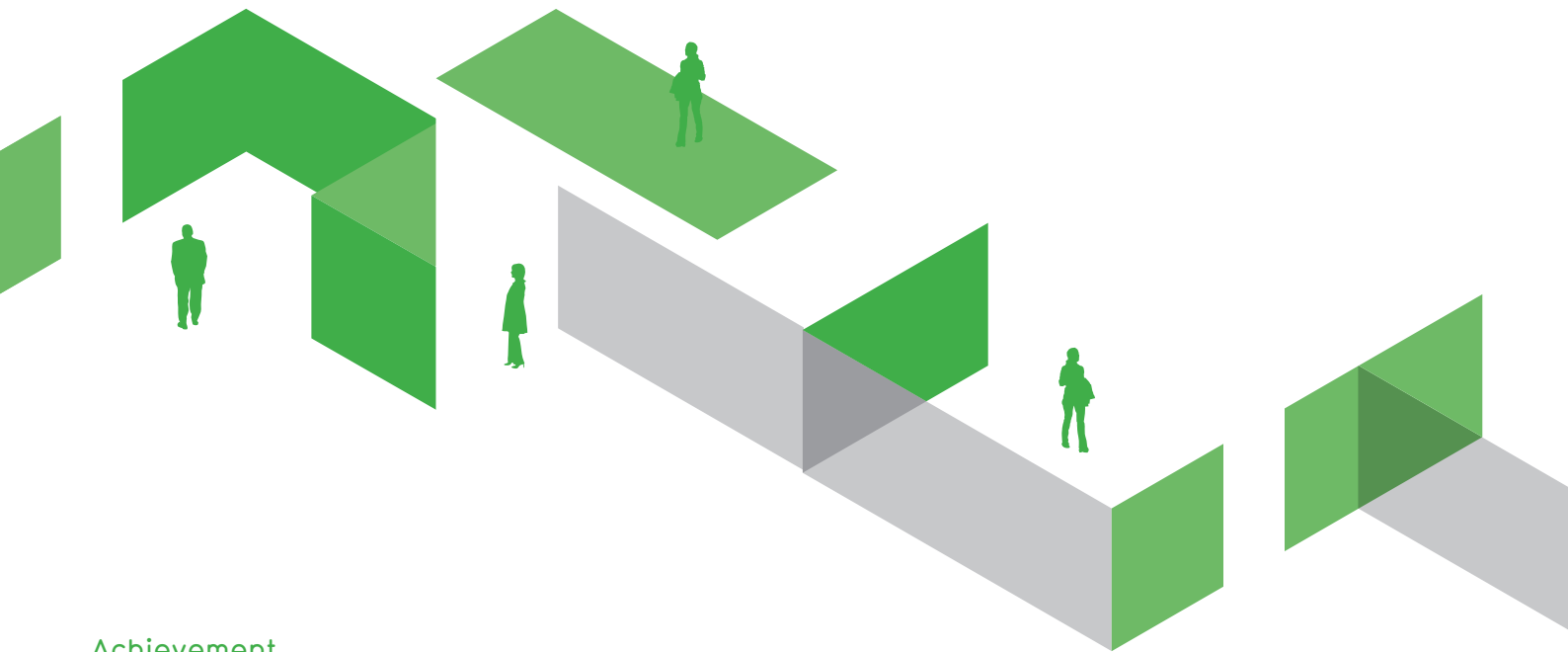
3 x full day

Ad hoc request

Is there a teaching and learning issue with which you would like support but is not mentioned above?

Please speak to your SIA about an ad hoc request

Bespoke support on request



Achievement

Progression over time – using data in the classroom

Do you need help to present the evidence of good in-year progress to offset the evidence of 3 year trend? Are your teachers using their knowledge of the assessed levels to accelerate the learning of those students who are not making expected progress?

This support will be tailored to your school, depending on the number of teachers and departments that require support

Bespoke full day

Department dashboard / SEF – secondary

Do you want to present the outcomes of each department in a way that evaluates the effectiveness of provision?

We will help you compose a brief document that captures quality of teaching, accreditation outcomes, good passes per entry etc for Governors and Inspectors

Bespoke full day

Good and outstanding results based evidence – secondary

1 x full day

Support to Governors on data understanding and usage

Do you want your governors to demonstrate they are functioning at an outstanding level? Do they need support in this, particularly in relation to understanding the data for your school?

We will provide training input to the GB on the use they should be making of the data that are available to them

3 x half days

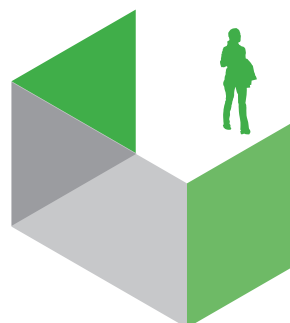
Ad hoc request

Is there an achievement issue with which you would like support but is not mentioned above?

Please speak to your SIA about an ad hoc request

Bespoke full day

Menu for Service Level Agreement with Schools Secondary, Special and PRU, Skills and Employability



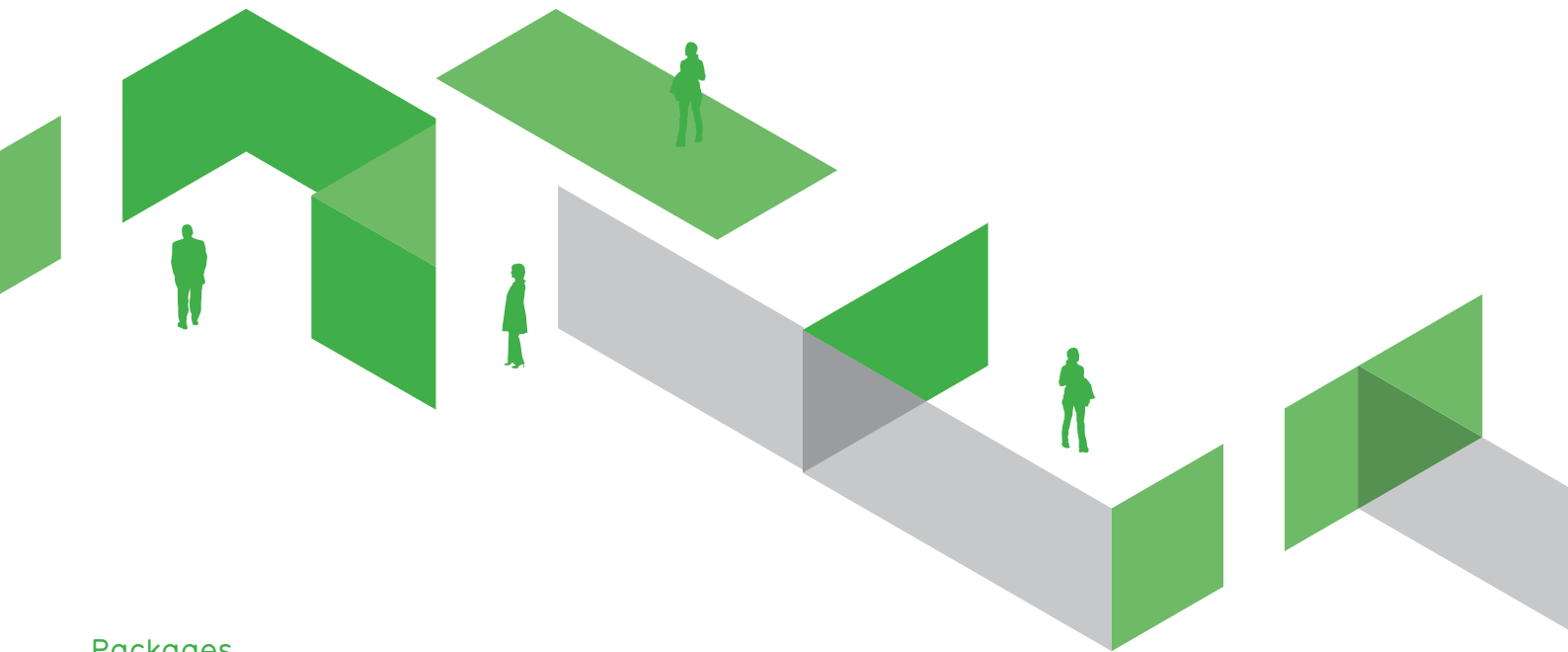
Behaviour and Safety

Ad hoc request

Is there a behaviour and safety issue with which you would like support?

Please speak to your SIA about an ad hoc request

Bespoke full day



Packages

2 day pre-Ofsted whole school review – team of 4 plus report

Would you like to rehearse your staff and gain an external view of your school in advance of your next Ofsted inspection?

We will conduct an inspection using Ofsted criteria and processes with a report that identifies any issues to be improved

2 x 4 full days

2 day Leadership and Management review – team of 2

Would you like to have a review of the functioning of Leadership and Management in your school?

We will conduct a review with a report that identifies any issues to be improved

2 x 2 full days

2 day Teaching and Learning review – team of 2 / 3 depending on size of school

Would you like to rehearse your staff and gain an external view of your school in advance of your next Ofsted inspection?

We will conduct an inspection using Ofsted criteria and processes with a report that identifies any issues to be improved

2 x 2 full days
2 x 3 full days

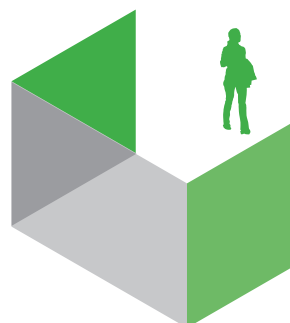
Headteacher appraisal

Would you like to secure your SIA to undertake the external adviser role on your appraisal?

Your SIA will know your school very well and will be in a position to give good advice to your appraisal panel

1 x full day

Menu for Service Level Agreement with Schools Secondary, Special and PRU, Skills and employability



Packages

Headteacher appraisal plus 3 additional SIA visits

4 x full days

Bespoke SEN review

Do you need to review the effectiveness of your SEN provision?

We will work with your SENCO and SEN governor to undertake an audit of your provision looking at SEN register, provision map, pupil progress tracking system, outcomes for students with SEN

Bespoke full day

Ad hoc request

Is there an issue with which you would like support but is not mentioned above?

Please speak to your SIA about an ad hoc request

Bespoke full day

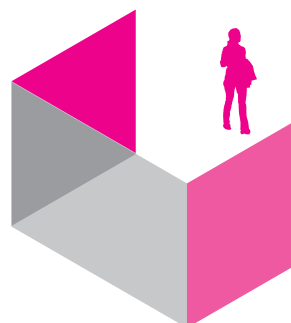
Bespoke twilight training*

Twilight

*additional cost of resources/planning time dependent on the number of delegates – price given on booking.

Menu for Service Level Agreement with Schools

Assessment and Moderation – Cross phase except where stated



Assessment and Moderation

Assessment in the National Curriculum

No levels? Help! How can we assess children's learning in the National Curriculum?

Bespoke support for SLT, teachers and TAs to assess children in reading, writing and maths from Year 1 to Year 6 using the National Curriculum. Colleagues bring evidence from children of different abilities to assess and discuss, and plan next steps in learning. There will also be opportunities to share and discuss effective assessment practice

1 x half day
1 x full day

Assessment for Learning: children are active learners

How can we accelerate progress in our school through assessment for learning? What does assessment for learning really mean? How effective is our school practice?

Bespoke practical support focussing on all aspects of good assessment for learning practice, for example:

- Learning intentions and success criteria
- Effective oral and written feedback
- Peer and self-assessment

1 x half day
1 x full day

Marking for Improvement

- What is effective marking for improvement?
- How can we make feedback even better?

Bespoke support on giving effective feedback to children in writing and maths. Teachers will have the opportunity to consider practical ideas to ensure children make good progress

1 x half day
1 x full day

Bespoke support for Assessment and Moderation

- How well are my children doing?
- How can I move them on?

Face to face assessment and moderation with year group teachers of writing, reading and maths. Teachers bring evidence from all children in their class to discuss and moderate with an adviser. Next steps in teaching and learning are planned. This can also be for a sample of children rather than the whole year group

1 x half day
1 x full day

Menu for Service Level Agreement with Schools

Governor Services

The partnership between School Leaders and their Governors working alongside each other to both demand and achieve excellent outcomes for pupils has never been more important. Experienced and knowledgeable Area Governance Officers working in collaboration with Senior Improvement Advisers can offer a range of training to enable the strategic accountability of leadership and governance in schools to be of the highest quality. We can offer in-house training packages, collaboration training packages, reviews of governance, coaching, mentoring, modelling and a consultation service with colleagues to discuss your requirements.

We have expertise and experience in working across all the school sectors and at all levels including; Maintained schools; Academies; Independent Sector; Primary; Secondary; Special and PRU.

Governor Services

Governing Body Meeting observation

A diagnostic tool to help your governing body identify key areas for development to ensure that the GB is performing its accountable and statutory roles to the highest standard. A School Area Governance Officer will attend your GB meeting, observe practice including the level of challenge and support provided, and produce a short report with recommendations for improvements

Estimate on application

Monitoring of GB minutes

Regular review of full GB minutes over a period of 12 months, with feedback to the GB. This monitoring tool has been designed specifically to assess the impact of GB in evidencing fulfilment of its roles and responsibilities in undertaking its core functions.

Estimate on application

Governing Body Activities/Projects

Working with a dedicated School Area Governance Officer, the GB and AGO will together identify aims and objectives for a specific development/activity/project, and evaluate the outcomes upon completion

Estimate on application

Clerking Service

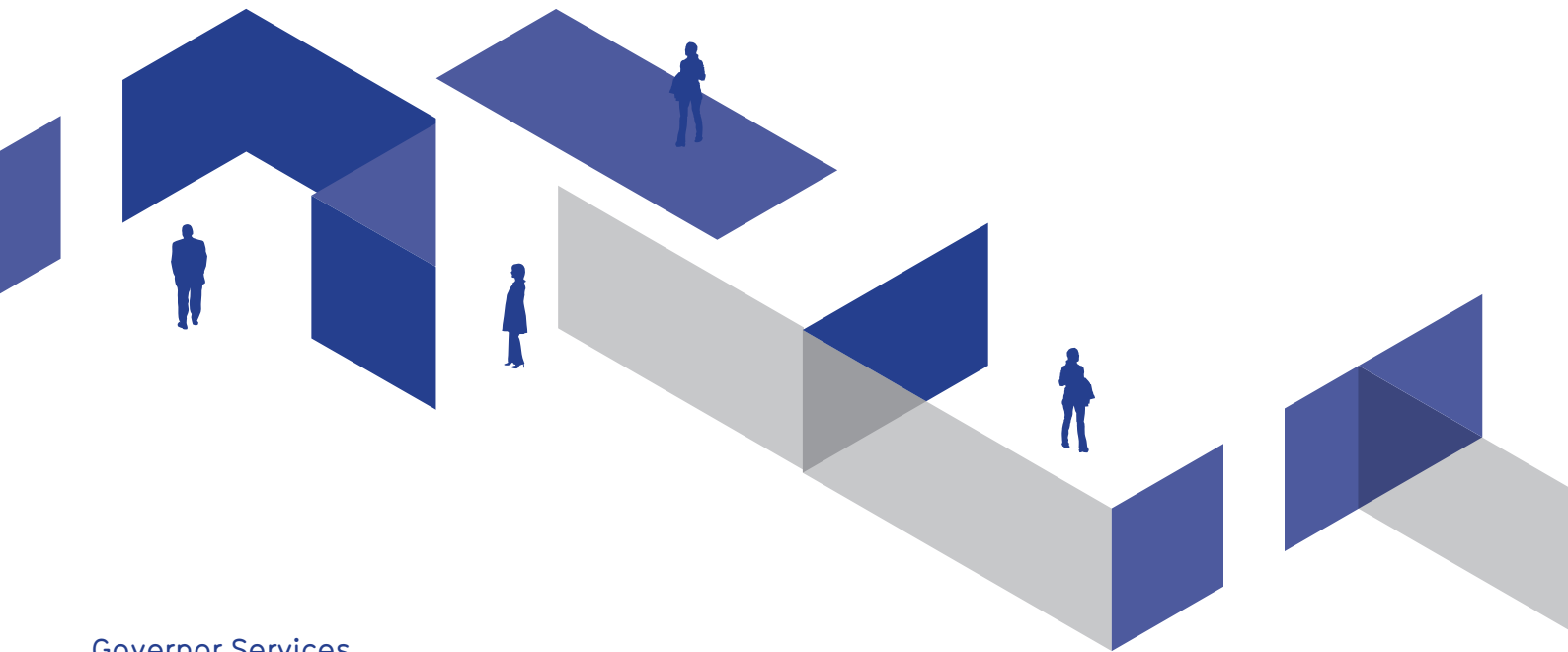
A well trained and supported professional Clerk for your GB to ensure legal and statutory compliance is met.

Separate SLA with GB

Governor Training and Development Programme

A comprehensive programme of e learning modules, face to face and in-house tailored development sessions for governors and clerks, including annual conferences for Chairs, Clerks and Governors, and biannual copies of The Governor magazine and monthly briefing papers to ensure that your GB is up to date with the latest statutory requirements and developments in education meeting the expectations of the governance handbook and competency frameworks. National Chairs and Clerks programmes.

Separate SLA with GB



Governor Services

Ofsted recommended review of governance

Estimate on application

A range of governance reviews for schools with RI, Good and Outstanding Ofsted judgements as well as review of governance as part of a leadership review.

Some review packages also provide a governing body action plan.

All prices are on application to provide you with a package that suits your school's needs.

Galaxy Federation -

- I was very happy with the overall delivery, resources and professional discussions that rose from the course.
- A competitive price compared to other providers of similar courses.

Jason Pearn,
Head of School, Oakfield Community Primary School

Menu for Service Level Agreement with Schools

Safeguarding in Education

Safeguarding is everyone's responsibility with education providers playing a vital role in ensuring the needs of all children are met and their welfare promoted. The Education Safeguarding Team has specialist knowledge of policies and procedures relating to education settings both locally and nationally. We can help ensure you meet the requirements of the statutory guidance Keeping Children Safe in Education 2016 and are able to evidence good safeguarding practice to meet Ofsted's requirements.

All of the training delivered by the EST is approved by Kent Safeguarding Children Board (KSCB) and is regularly updated to reflect new learning, including from Serious Case Reviews.

Centralised training for Designated Safeguarding Leads accessed via CPD online including 2 yearly refresher or online safety certificated training	DSL 1 day Book through CPD online
Bespoke Inset training or in situ for whole school staff groups SLT or Safeguarding Governors or Management Committees	1 x full day 1 x half day
Bespoke online safety training commissioned directly by a school	1 x full day 1 x half day
Review of school or setting's safeguarding arrangements (policy and practice) prior to Ofsted or when a cause for concern has been identified (report and action plan follow up)	Bespoke support on request
Independent management investigations when commissioned by HT or GB to assess risk (eg. staff suitability or children who pose a risk to others). Also support for disciplinary process following a safeguarding concern that has been handed back to the school or setting via LADO	Bespoke support on request
Specific support and advice or a review of online safety arrangements following a safeguarding concern triggered by online predation	Bespoke support on request
Twilight Safeguarding training session for one school	(starting 3pm – up to 2 hours)*
After Hours Twilight Safeguarding training sessions for one school	(starting after 5pm – up to 2 hours)*
Out of County reviews and consultancy work	See pricing sheet for more information
Care standards, mandatory visits to residential and special schools as required by NMS (Care Standards Act 2000)	1 x full day
Bespoke DSL training	Price available on request

No charge to schools for support in multi-agency meetings or consultancy scoping meetings up to one hour.

*additional cost of resources/planning time dependent on the number of delegates – price given on booking.

Menu for Service Level Agreement with Schools

Management Information

The Management Information team collects, manages and analyses complex data and is responsible for statutory returns to government, including the school census and the school workforce census. It reports on a wide range of information held across numerous systems to provide regular operational and performance reporting. The team is able to support schools across data collections and reporting, and can respond to bespoke report requests. It also provides training to ensure that systems and data are used effectively to support continuous improvement.

We have experience in working with maintained schools, academies and the Independent sector.

Management Information also has a new traded offer to schools outside of the School Improvement SLA. For full details and costs please see www.managementinformationplus.co.uk

Training on Getting Data-Fit for Ofsted (Primary)	Book through CPD online
Training on Understanding and Using Data (Primary)	Book through CPD online
Training on FFT Aspire (Primary)	Book through CPD online
Training on Preparing for the School Workforce Census	Book through CPD online
Training on Preparing for the School Census	Book through CPD online
Consultancy Support	1x full day 1x half day 1x twilight

Menu for Service Level Agreement with Schools

Inclusion Support Service Kent - ISSK

Our Team of Specialist Advisory Teachers ensure that schools, settings and professionals working with children and young people comply with their specific and general duties under the Equality Act 2010 and safeguarding duties under the Education Act 2006.

In line with Kent's Strategy for Vulnerable Learners we focus on raising the attainment and accelerating the progress of all pupils. We achieve this by promoting equality, inclusion and well-being, eliminating discrimination, championing diversity, fostering good relations and opening dialogue between different groups.

ISSK has an outstanding track record in narrowing the gap in achievement and improving outcomes for vulnerable groups including those from Minority Ethnic groups, pupils who have English as an Additional Language (EAL), Gypsy, Roma and Travellers, unaccompanied asylum seeking children and refugees. We are also accredited Stonewall Partners supporting schools to meet the needs of their Lesbian, Gay, Bisexual and Trans (LGBT) pupils and equipping staff to tackle homophobic, biphobic and transphobic bullying.

ISSK offer bespoke school improvement support for all staff including Senior Leaders, Governors, Managers, TA's and front line staff. This includes consultancy, training, and the modelling of effective strategies to raise standards.

What are people saying about ISSK?

"We were provided with useful resources, scaffolds and ideas that could be used in the classroom, not only that would benefit EAL children, but others as well. I had a lot of positive feedback from staff who felt that they were now able to give more support to EAL children going forwards as well as to others which would help raise standards in writing."

"The advice and training has on every occasion been entirely appropriate, well planned for the required audience and well delivered. Feedback from training sessions has always been positive; staff have left with lots of new ideas to try. Issues raised in QA sessions have been addressed confidently. The success of these sessions can also be attributed to the Advisory Teachers approachable manner and positive, encouraging style of delivery."

"From a position where there was some anxiety among staff and students, we have now reached a place where staff are confident of what needs to be done to support [EAL] students...we are aware of excellent practice in the Academy. Students are prospering as their teaching and learning develops."

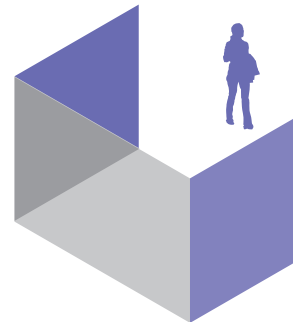
Ad hoc requests: can't you find what you're looking for? We can help.

ISSK can design a menu of bespoke school improvement support which can be tailored to fit your specific context and improve leadership and management, quality of teaching, learning and assessment, personal development, behaviour and welfare, SMSC and outcomes for all pupils

For more information please contact Gillie Heath 03000 417 093 / gillie.heath@theeducationpeople.org

Menu for Service Level Agreement with Schools

Inclusion Support Service Kent - ISSK



Quality of Leadership and Management

Inclusion Support Service, Kent Audit of Need:

To raise the achievement, well-being and inclusion of Vulnerable Children and Young People including Minority Ethnic, Gypsies, Roma, Travellers, EAL and LGBT Pupils

Is your practice inclusive of all your pupils?

We will provide a full audit to assess provision and target support and resources for vulnerable learners including EAL/GRT:

- Data analysis
- Curriculum and work scrutiny
- Lesson observations
- Stakeholder consultations
- Learning walk
- Action planning

1 x half day

We will conduct ongoing reviews of impact and outcomes completed against the audit

1 x half day

The Equality Act

Are you confident in complying with the general and specific duties under the Equality Act?

We will support you in setting equality objectives that are specific and measurable, ensuring inclusivity through whole school policy

2 x half day

We also provide training on the Equality Act:

“Understanding equalities and how to address complex issues – a practical workshop reflecting on real scenarios to develop confidence in this area”

Book through CPD online

Effective communication

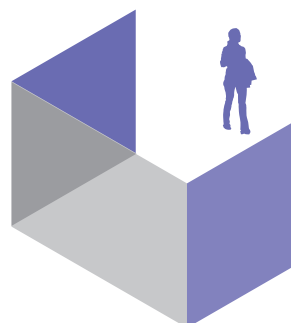
Are all your staff confident communicating effectively with all families?

We will provide training on “Effective strategies for communicating with EAL and GRT families for office staff in schools”

Book through CPD online

Menu for Service Level Agreement with Schools

Inclusion Support Service Kent - ISSK



Achievement

EYFS transition

Does your transition programme consider the needs of all your young children?

We will support you in:

- identifying needs of vulnerable EAL, GRT and LGBT children
- Embedding good behaviours for learning at the earliest stage, including helping parents to access EYFS settings and support with ready for school days

1 - 4 x half day

Transition Key stage 2-3:

How ready and confident are all your young people to make the transition into KS3?

We can support transition projects that will promote:

- Effective communication between schools and parents
- Mentoring of vulnerable pupils
- Training Buddies
- Setting up transition support groups

1 - 4 x half day

Accurate language and ethnicity data

Do all the families and young people in your school feel confident to declare their ethnicity and language?

We can support schools to obtain accurate language and ethnicity ascription by developing an inclusive ethos, enabling targeted support and effectively monitoring of progress

Bespoke support on request

Developing parental engagement: 'Family Learning'

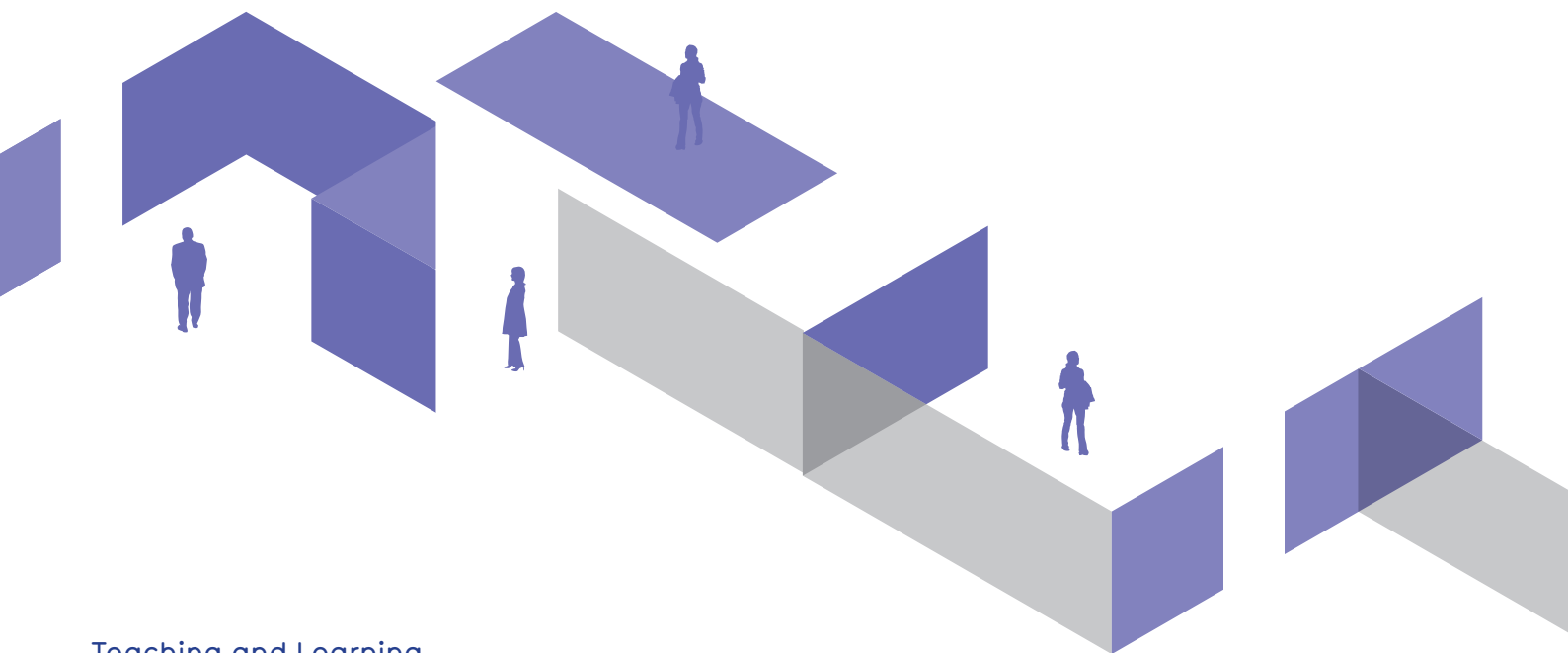
We offer 'Family Learning' training to Develop and enhance engagement with vulnerable families including those from Minority Ethnic and Gypsy, Roma and Traveller communities

Book through CPD online

Family Learning Training

We also provide 'Family Learning' sessions to promote the engagement of parents/carers in their children's learning. Modelling strategies for parents to support literacy at home, including valuing the use of first language

Book through CPD online



Teaching and Learning

Developing Academic Literacy

Are your EAL or GRT children and young people able to converse fluently in the playground but struggle in the classroom?

We offer training to raise the achievement of advanced EAL learners, "Developing Academic Literacy across the curriculum"

Book through CPD online

EAL or SEN?

Do you find it difficult to determine if children are struggling because they are EAL or SEN?

If so attend our training "Assessment for learning: effectively assessing EAL learners to accelerate progress and identify SEN"

Book through CPD online

Partnership teaching

Are some of your minority ethnic pupils finding it hard to engage in learning within the classroom?

Our Advisory Teachers can model inclusive lessons covering identity and diversity and promoting EAL strategies in order to remove barriers to learning for vulnerable learners including GRT and EAL

1 x half day

An Inclusive Curriculum

Does your curriculum reflect the school community?

We can increase engagement and raise achievement by undertaking a curriculum scrutiny and enhancement to ensure it is real and relevant to your school's community

1 - 2 x full days

Effective TA support for EAL learners

Do all TAs in your school feel confident to teach EAL pupils?

If not, our training 'Effective EAL intervention strategies for Teaching Assistants supporting bilingual pupils' will support with their development

1 x half day

Improving reading and writing through effective speaking and listening

'Talking Partners' understanding and using talking partners' strategies to raise achievement in reading and writing across the curriculum

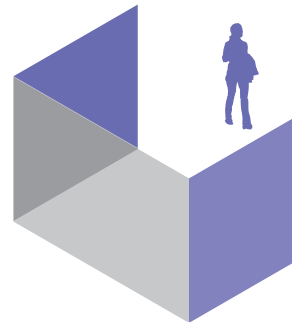
2 x full days

'Talking Partners' support in class

1 - 2 x half days

Menu for Service Level Agreement with Schools

Inclusion Support Service Kent - ISSK



Teaching and Learning

Newly arrived EAL learners

Do you struggle coping with newly arrived EAL learners within the classroom?

We provide training on "Accelerating the progress of new arrivals with English as an additional Language"

Book through CPD online

New Arrivals

Would you like support with mid-term arrivals in school?

We can develop an effective induction process for New Arrivals, including:

- holistic assessment
- peer mentoring
- use of first language
- liaison between school, home and community

4 x half days

EAL support in Early Years

Do you have EAL children within your setting?

This training will develop your understanding of their needs "Supporting Children with English as an Additional Language in The Early Years"

Book through CPD online

Access to district network and update meetings

Bespoke support on request

"Talking Maths"

Mathematics is about problem solving. Problem solving requires thinking skills. Thinking skills require academic language. This training will introduce schools to an intervention programme that targets speaking and listening skills in the context of mathematical language

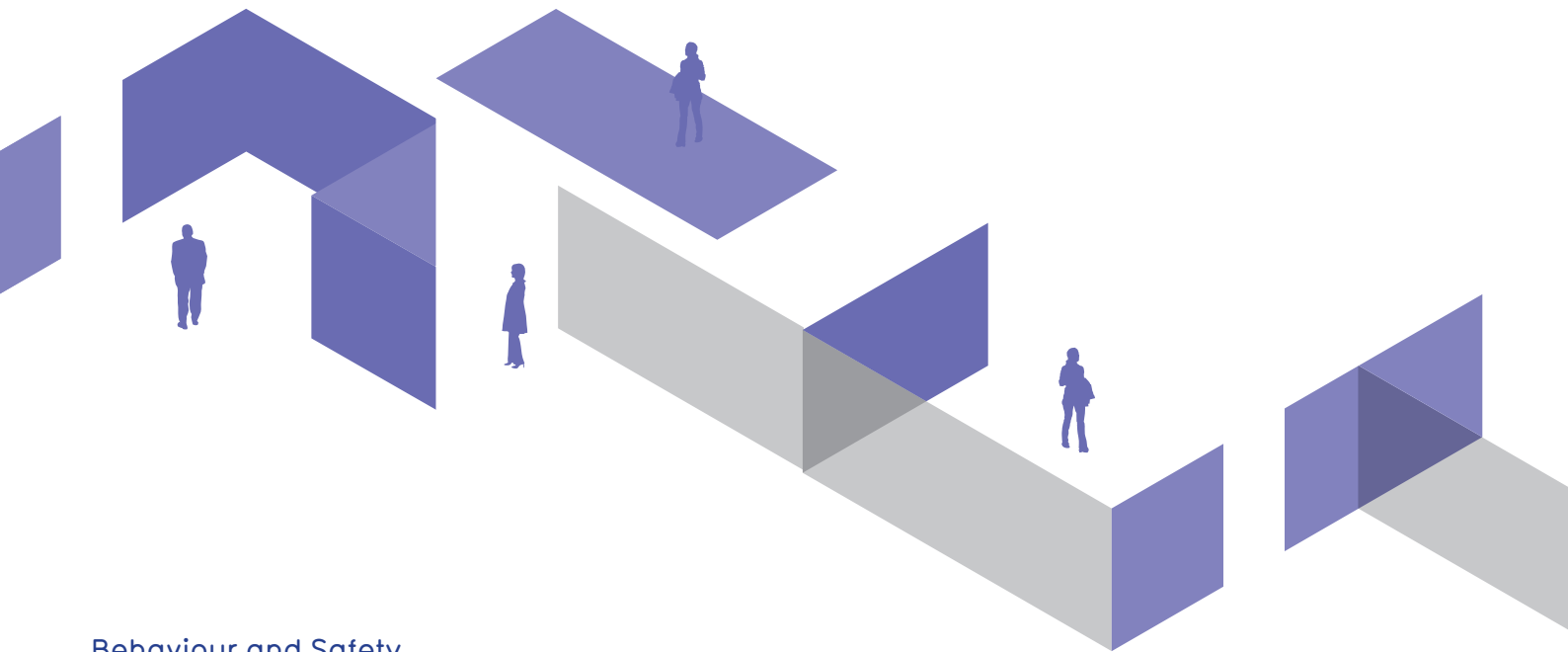
Bespoke support on request

"An introduction to EAL pedagogy and effective strategies to engage pupils with English as an addition language"

This training will help colleagues to develop a clear understanding of the needs of pupils with English as an additional language and enable them to use and evaluate distinctive teaching approaches to engage and support them.

Teaching Standards: Adapt teaching to respond to the strengths and needs of all pupils

Bespoke support on request



Behaviour and Safety

Bullying and discrimination

Do you have strategies in place to identify, respond to and prevent bullying including racist and homophobic bullying and discrimination? If not, this training will help:
'Dealing with and preventing racist incidents and other forms of bullying'

Book through CPD online

"Equipping staff to tackle homophobic, biphobic and transphobic bullying in primary schools"

To develop the knowledge, tools and confidence to train colleagues on tackling HBT bullying and celebrating difference, as well as meeting the requirement of the new Ofsted inspection framework in regard to LGBT inclusion?

Book through CPD online

"Supporting Trans children and young people in schools"

This training will:
Develop understanding of what it means to be a young Trans person in Britain today
Ensure that your school policies and practice are inclusive and supportive of Trans pupils, staff and parents
Teach staff to support Trans pupils to be confident in who they are
Improve attendance and achievement of Trans Children and young people, eliminate transphobic bullying in your school

Book through CPD online

"Radicalisation: a curriculum response"

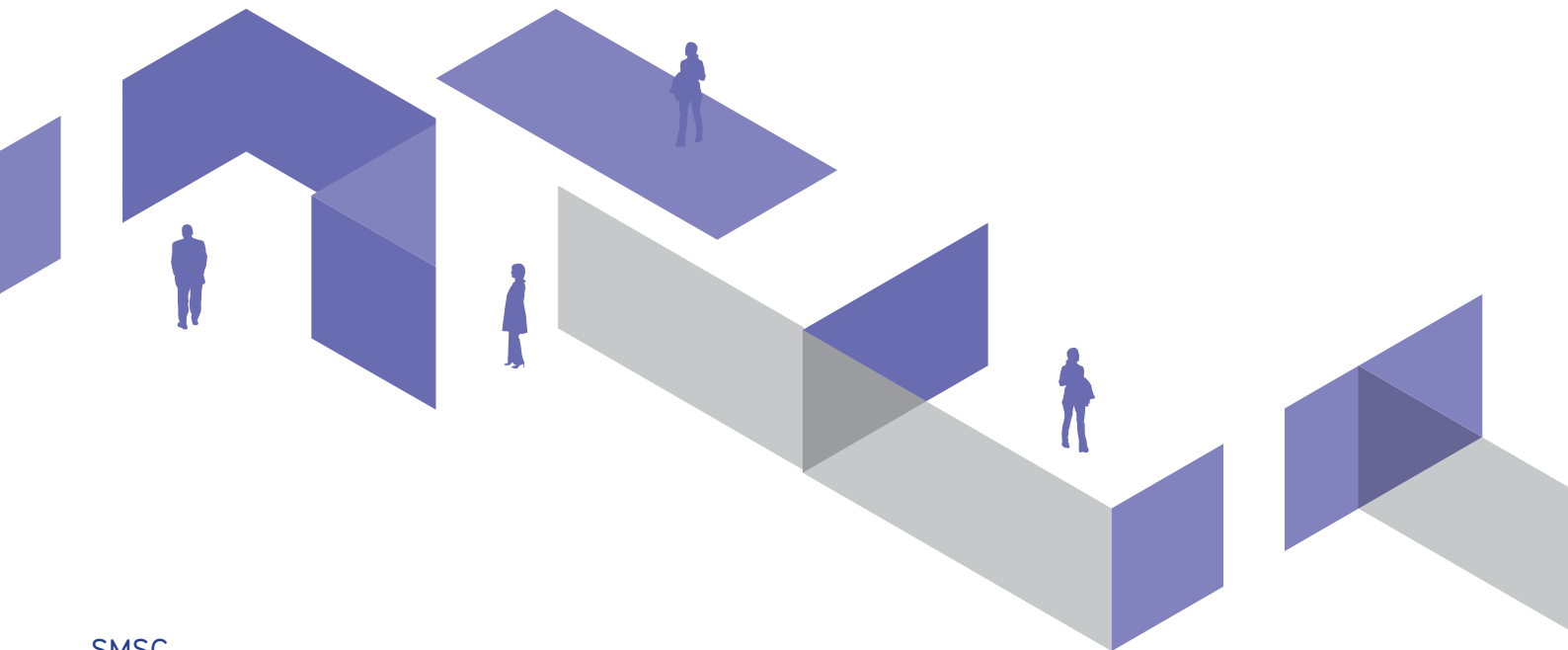
A chance to look at the Prevent strategy within the National and Ofsted context and how it translates into whole school and classroom practise

Book through CPD online

"Schools Linking"

Schools Linking is nationally recognised by the DfE and DCLG as offering a positive, age appropriate curriculum response to SMSC, British values and the Prevent Duty.
ISSK is able to offer Primary schools training, ongoing advice and support to facilitate linking across Kent. Linking offers a meaningful experience, supporting children to explore identity and diversity, champion equality and develop dialogue between paired classes from different schools. This year-long, curriculum rich programme will contribute to fostering good relations and breaking down barriers between different communities.'

For more information contact
gillie.heath@kent.gov.uk



SMSC

SMSC training

'Planning real and relevant activities for SMSC which develop critical thinking, enhances equality and builds positive relationships'

Book through CPD online

EYFS Raising Cultural Awareness and Inclusion of Gypsy, Roma and Irish Traveller Communities

Do you have Gypsy, Roma and Traveller families attending your settings?
Are you finding it hard to engage with GRT families within your community?
If so, this training might help

Book through CPD online

GRT awareness training

Are you aware of the possible barriers to engagement for this often vulnerable community?

There is support available 'Raising cultural awareness and inclusion of Gypsy, Roma & Irish Traveller communities'

Book through CPD online

Language of the Month

Are all your pupils and families proud of the language they speak at home?
We can help by introducing 'Language of the Month' to your school and supporting the school with a display and resources

1 -4 half days

Young Language Ambassadors

Young Language Ambassadors aims to provide children and young people with the skills to act as ambassadors for the appreciation of other languages and cultures within their school while supporting the school's induction of newly arrived pupils

1 x full day

Ad hoc request

Do your pupils have a developing knowledge and appreciation of the range of different cultures, faiths and communities within school and further afield?
Do all staff and governors foster greater understanding of and respect for all people (particularly those with protected characteristics) through their words, actions and influence within the school and more widely in the community?

ISSK can offer assemblies and workshops that explore identity/identities, celebrate diversity, promote equality and prepared pupils for life in Modern Britain.

More information on request

Menu for Service Level Agreement with Schools

NQT Induction and Support

The experiences that NQTs have during their induction, can in some cases make the difference between a good/outstanding teacher and one who is unable to complete induction. The NQT Induction Team has several years' experience and provides a comprehensive induction service for over 1,000 NQTs each year. It supports schools, HE colleges and academies that have recruited NQTs within Kent, across the UK and in other parts of the world, providing support and training for NQTs, Mentors and the wider school community.

NQT Induction and Support

Core Package: ensures that your NQT/s and NQT mentors are able to fulfil the statutory requirements for the successful completion of the induction period. This year the Core Package for schools in Kent also includes an initial review (provided the induction team have been made aware of any concerns by the end of the NQTs forth term). If the concern is raised after the NQTs fourth term, the school will be charged for the initial visit. This may involve a member of the Induction Team visiting the school. Visits will be arranged based on an initial assessment of the situation between the school and the Induction Team. Where demand is high, the Induction Team may have to prioritise visits based on need

See attached price guide

Enhanced Package: bespoke support from an Induction Specialist
This package is targeted at groups of schools and groups of NQTs or NQT mentors to come together and work collaboratively. Bespoke packages can also be offered to individual schools wanting to improve their induction processes

Bespoke support on request

Accelerated Induction Package: This package enables schools to apply for a reduction to their NQTs induction period. It is targeted at NQTs who are judged to be consistently good or better and have significant teaching experience prior to starting induction. The process includes a review of the NQT's portfolio and then at least half a day at the school to carry out two lesson observations and a meeting with the mentor and NQT. If after reviewing the portfolio the NQT is not eligible for the process, there is a minimum charge of £150. This accounts for the time taken to review the portfolio

Bespoke support on request

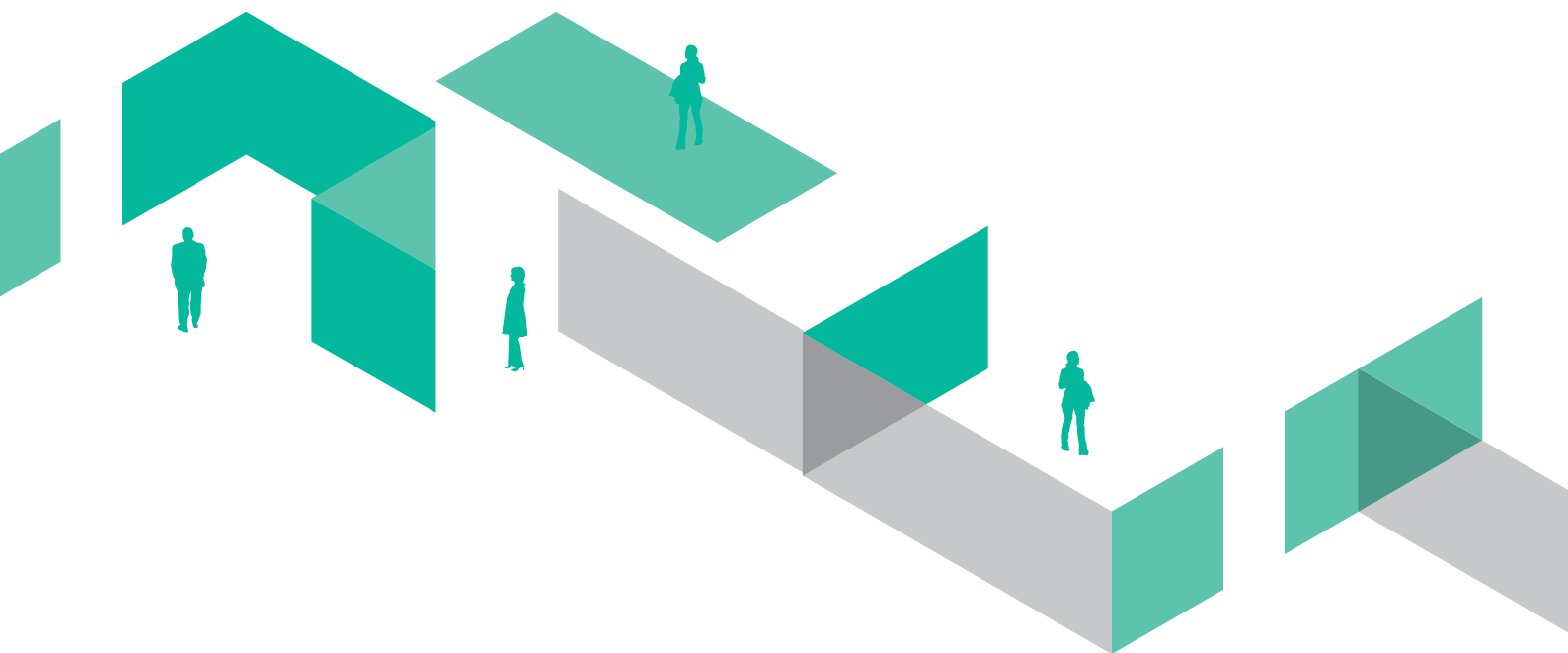
Ad-hoc Support: support for an NQT, delivered to enhance the NQT's progress. This could be one to one support for an NQT including an observation and feedback

Bespoke support on request

The NQT induction and support team can provide bespoke twilight training for primary NQTs designed to meet not only the individual needs of your NQTs allowing for the personalised induction programme as identified in the statutory guidance, but also any developmental areas the school(s) may have identified in its school action plan.

All training is delivered by experienced teachers and are designed to be informative interactive and challenging.

Price available on request



Tutor/Mentor Training

The training covers key points from the statutory guidance for induction and includes, NQT entitlements, how to write the termly assessments, action to take if an NQT is not making progress and allows time for an individual question and answer session for specific queries.

It is also suitable as a refresher session for NQT tutors / mentors who have not been on the training in the past 5 years

Book through CPD online

Observing and Debriefing Others (training for mentors/tutors)

Suitable for tutors / mentors who are new to the role and also those who would like to ensure they are able to observe their NQT effectively and accurately measure their progress

Book through CPD online

Bespoke Training: for a school's induction tutor and subject mentors

1 x half day

Primary NQT Programme

These sessions are a good opportunity for NQTs to meet with their peers in neighbouring schools and to work with experienced practitioners to improve their classroom practice. All delegates will receive a free Early Professional Development Portfolio

Book through CPD online

A Guide to Successful Induction

The sessions cover the core elements of induction so that NQTs know what is expected of them throughout the induction period. All delegates will receive a free Early Professional Development Portfolio

1 x twilight

Cause for Concern (C4C) visits remain free if the NQT induction team are notified prior to the start of an NQT's 5th term. When issues relate to classroom practice we have found that it proves beneficial to both the school and NQT when a joint observation takes place, if this is booked for the same day as the C4C visit it will attract a reduced charge than if the observation takes place after the first visit.

See pricing sheet for further information

Menu for Service Level Agreement with Schools

Horton Kirby – Primary Science Support

In an ever-changing world, it is essential that our children engage with, understand and enjoy finding out about the scientific concepts that underpin how our universe works. Our goal as teachers should therefore be to make all of our children scientifically literate.

Horton Kirby – Primary Science Support

Supporting Science Leaders

Using his 13 years' experience as a primary Science adviser, Andrew Berry can assist the School's science leader with a range of issues related to their role. This could include:

- Improving working scientifically across the school
- Making children's recording work
- Ensuring that assessment assists great learning
- Moderating achievements
- Assisting with children interviews
- Ideas to develop the outdoor areas etc

1 x half day

Raising Standards in Primary Science

- A practical session on how to improve children's ability to 'work scientifically'
- Advice on how to engage and excite the children
- Advice on developing science assessment
- Strategies for improving planning
- Strategies for developing children's recording
- Information on how to improve children's scientific vocabulary
- Information on a range of resources; equipment, places and spaces

1 x full day

Bespoke twilight training*

1 x twilight

*additional cost of resources/planning time dependent on the number of delegates – price given on booking.

If you would like to use your credits to book a visit to Horton Kirby Environmental Centre, please let the Centre know at the time of booking.

Menu for Service Level Agreement with Schools

Literacy and Numeracy Support – Cross phase

We aim to provide a high quality and varied offer which will support all your maths and literacy requirements over the school year. Our packages are flexible and can be adapted to suit your specific needs. This may include staff meetings and twilights, or longer Inset sessions. Support for teaching and learning within the classroom is also available, together with guidance for leaders of literacy. Seasonal meetings for subject leaders provide an importance aspect of the programme, when leaders can gather together to meet with similar colleagues in order to share ideas and receive updates from the DfE or KCC.

Quality of Leadership and Management

Developing middle leaders and subject leaders	2 x 6 x half days
Effective working with parents	1 x half day
Maths subject leadership for newly appointed leaders	1 x full day
Literacy subject leadership for newly appointed leaders	2 x half days
Triangulation audits for English and/or maths	1 - 2 x full days 2 - 4 x half days

Quality of Teaching and Learning

Curriculum support: - bespoke English literacy or maths by negotiation	1 - 6 x full days
E.g. subject knowledge / pedagogy	2 - 6 x half days
Spelling, punctuation and grammar	1 - 2 x half days
Developing the outdoor classroom	1 - 2 x full days
Improving phonics provision	1 - 4 x half days
Assessment for Learning	2 - 4 x half days
Developmental marking	1 x half day or full day

Achievement

Challenging more able pupils	2 - 6 x half days
Mixed aged planning roles / responsibility in small school	1 - 2 x half days
Bespoke support for assessment and moderation of English or maths	1 - 2 x half days
Bespoke twilight training*	1 x twilight

*additional cost of resources/planning time dependent on the number of delegates – price given on booking.

Menu for Service Level Agreement with Schools

The Outdoor Education Unit Training and Support Options

The Outdoor Education Unit provides support, advice and guidance for schools to develop high quality Outdoor Learning as key tool for pupil learning and development. We provide a wide range of training and support with developing and integrating Outdoor Learning into curriculum teaching, including teacher skills development, as well as with the planning and management of safe and high quality educational visits and activities.

We provide bespoke Inset/CPD training for school staff, as well as on-site consultancy and support. Please do contact us to discuss how Outdoor Learning can support and develop your schools teaching and learning.

The Outdoor Education Unit Training and Support Options

Developing Outdoor Learning within your Curriculum

Setting clear aims and objectives, practical training and ideas linking Outdoor Learning to the new Curriculum. e.g. -

- Maths and English activities using outdoor learning;
- Cross-curricular and topic based Outdoor Learning ideas and support;
- Using your local environment and resources for science, history, geography and environmental learning activities

1 x full day / half day / twilight as requested

Developing School Grounds for Outdoor Learning

- Site audit/evaluation
- Discussions with key staff involved in delivery
- Recommendations and outline development plan

1 x full day / half day / twilight as requested

Outdoor Learning – practical skills

Flexible and practical skills training for teaching staff, providing easy to use hands-on activities and ideas, along with safety and group management support across a wide range of Outdoor Learning activities.

Developing the use of local environments -

- Beaches and Coastal areas
- Forests and Woodlands

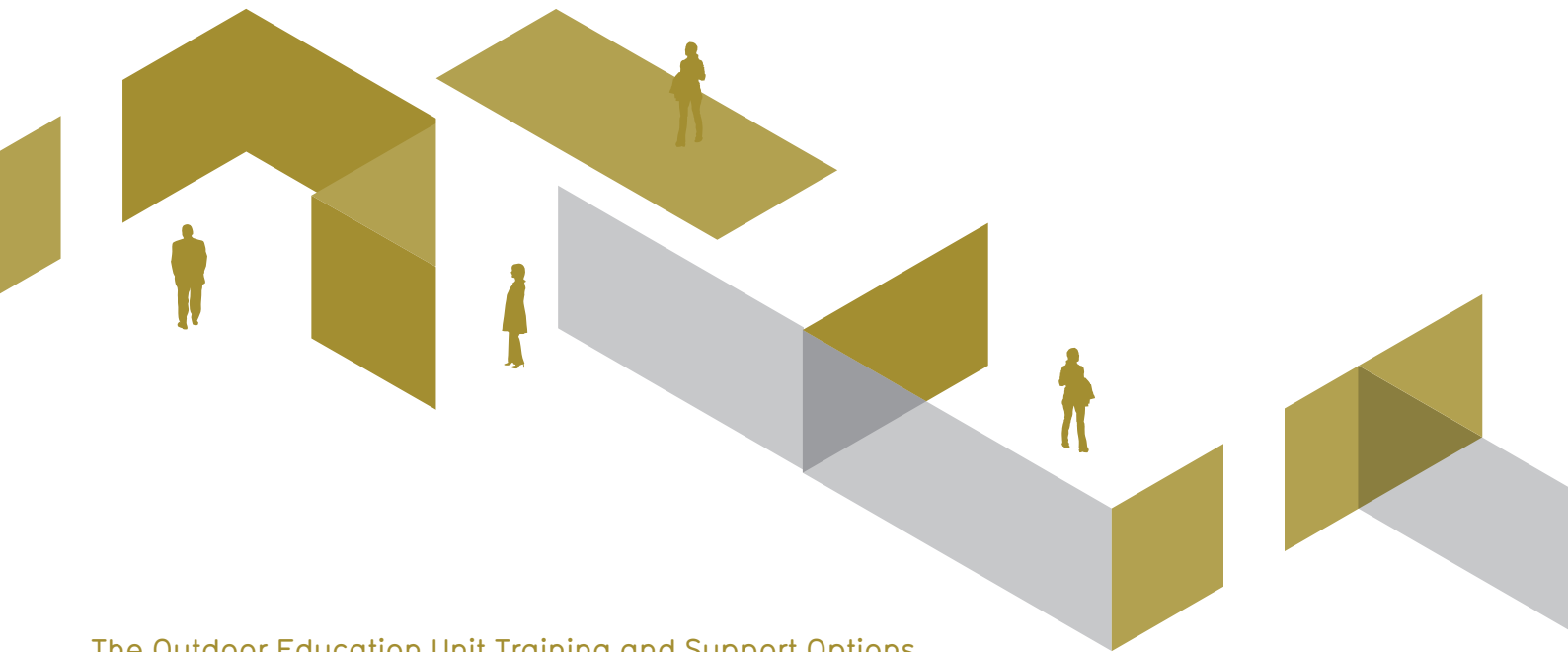
Developing Outdoor Learning Activities -

- Team-building, problem-solving and communication skill activities for curricular and personal development
- Forest School and Bushcraft
- Orienteering, map-work and navigation
- Climbing and Bouldering
- Camping and Journeying

Leading Educational Visits -

- Practical skills for planning and managing Educational Visits

1 x full day / half day / twilight as requested



The Outdoor Education Unit Training and Support Options

Effective management of Educational Visit systems and procedures

- Audit and review of current systems and procedures
- Discussions with key staff
- Roles and Responsibilities, including legal context
- Recommendations and outline development plan

1 x half day / twilight as requested

Planning and Managing Educational Visits - Whole Staff Inset Training/Workshop

- Practical visit planning support and ideas, including residential and adventurous activities visits
- The importance of aims and objectives on educational visits
- Risk Management and risk-benefit analysis
- Communications and Emergency planning

1 x full day / half day / twilight as requested

Outdoor Learning - NQT/Trainee Teacher Support

- We can provide a flexible and bespoke range of support for Trainee teachers and NQTs in using Outdoor Learning as a tool for learning
- Training in planning and managing educational visits and risk management

1 x full day / half day / twilight as requested

Bespoke Outdoor Learning Inset Training

1 x full day / half day / twilight as requested

Holy Trinity and St John's CEP School, Margate

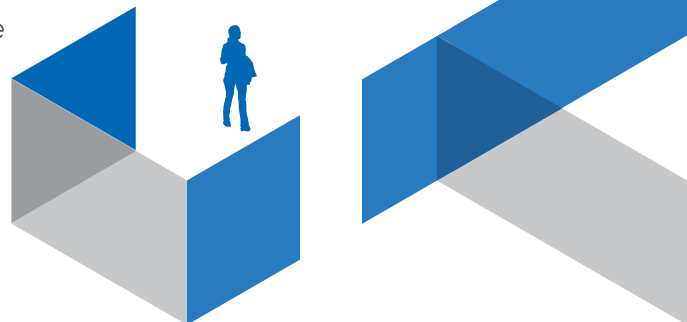
- Booking was 'Straightforward and efficient'.
- Communication with the adviser was 'very professional and effective'.

Daniel Short, Headteacher

Menu for Service Level Agreement with Schools

PE Support

Jo Winkler is a Lead Senior Improvement Adviser with a PE specialism and was previously the county Adviser for Physical Education across both Primary and Secondary phases. She can provide quality support for your school. In particular schools may want the opportunity to buy in support around the aims of the PE and School Sport funding.



PE Support

We are aware that schools may like the opportunity to buy in PE support using either their PE and School Sport Government funding for Primary schools or credits.

Schools looking to use their funding should look at the guidance notes below.

Purpose of funding

Schools have to spend the funding on improving their provision of PE and sport and will have the freedom to choose how they do this following the DFE guidelines below:

Schools must use the funding to make additional and sustainable improvements to the quality of PE and sport they offer. This means that you should use the premium to:

- Develop or add to the PE and sport activities that your school already offers
- Make improvements now that will benefit pupils joining the school in future years

For example, you can use your funding to:

- Hire qualified sports coaches to work with teachers
- Provide existing staff with training or resources to help them teach PE and sport more effectively
- Introduce new sports or activities and encourage more pupils to take up sport
- Support and involve the least active children by running or extending school sports clubs, holiday clubs and Change4Life clubs
- Run sport competitions
- Increase pupils' participation in the School Games
- Run sports activities with other schools.

You should not use your funding to:

- Employ coaches or specialist teachers to cover planning preparation and assessment (PPA) arrangements - these should come out of your core staffing budgets
- Teach the minimum requirements of the national curriculum - including those specified for swimming.

We are able to offer the following:

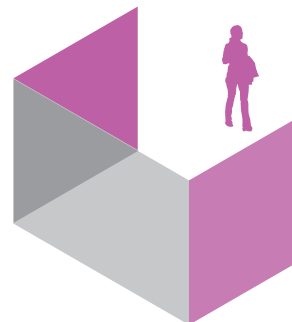
- Staff training in PE activity areas
- A review of PE in your school
- A quality assurance visit looking at the delivery of PE.

1 Day's support £600 or 12 credits

½ day or twilight £300 or 6 credits

Menu for Service Level Agreement with Schools

CPD Offer



CPD Offer

The Standards and School Improvement team offers continuous professional development (CPD) for all teachers and governors who work with and for children and young people in settings and schools. Our programmes are delivered by experienced Improvement Advisers and external providers in the form of workshops, twilight sessions, courses and conferences across the academic year. The 2018/19 core programme is devised in response to feedback from individuals, schools and collaborations and will support the delivery of high quality Teaching and Learning, Leadership and Management and Assessment. We aim to provide a needs driven CPD programme designed to meet current local and national priorities which will evolve across the academic year dependent on request, need and new initiatives.

The School Improvement SLA for schools includes access to an entitlement menu and schools purchasing it will be allocated a number of credits. Schools can use their credits against the majority of courses run by the School Improvement team. If schools do not have any credits and sit outside of the agreement they will be billed for delegate attendance.

Collaborations/Groups of schools/Whole School Inset

A range of our events are able to be purchased and run locally as a bespoke offer. Details of those events can be found on CPD online (www.kentcpdonline.org.uk) in the School Improvement Services Portal. If you are unable to find the event that you're looking for please contact schoolimprovementsla@theeducationpeople.org.

Please see the attached pricing structure for further information.

It is important to use that we receive feedback from you in order to ensure that we are supporting standards within your school. If you can't find the CPD that you require please contact Amy Raggett, CPD Programme Manager (amy.raggett@theeducationpeople.org or 03000 414513) to discuss your requirements.

Contacts:

schoolimprovementsla@theeducationpeople.org

Jayne Bartholomew:

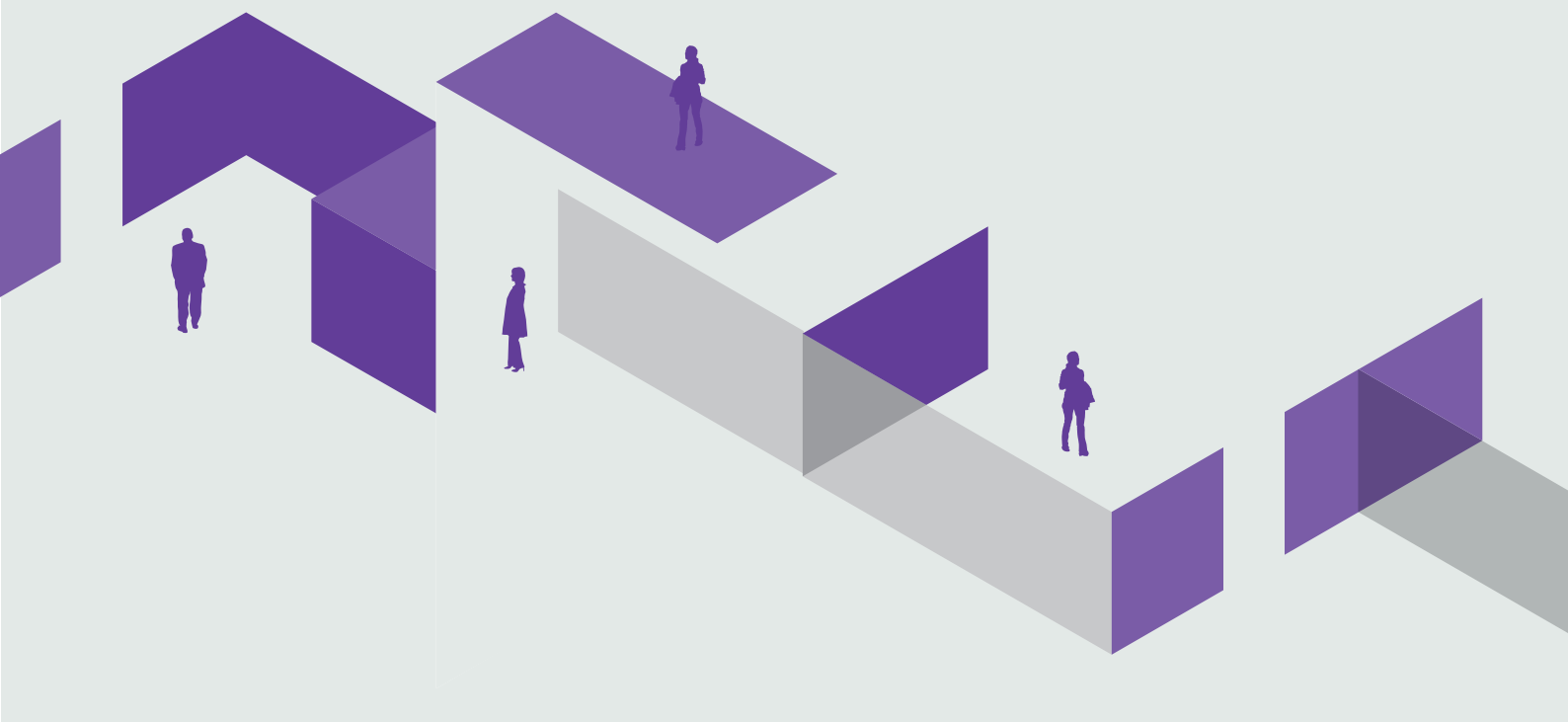
jayne.bartholomew@theeducationpeople.org

03000 415820

Kat Bellinger:

kathryn.bellinger@theeducationpeople.org

03000 415840



**THE EDUCATION
PEOPLE**

Copyright © 2018
Edseco Ltd trading as The Education People