



Child Protection Newsletter

January 2023

IN THIS ISSUE

- [Welcome](#)
- [Education Safeguarding Service Updates](#)
- [Core Safeguarding Training for DSLs](#)
- [Safeguarding Support Package for Schools](#)
- [NSPCC Resources](#)
- [Kent and Medway Hope Hack](#)
- [The Role of the Personal Advisor with Care Leavers](#)
- [Early Years and Childcare](#)
- [Online Safety](#)
- [Updates and Resources](#)
- [A Longer Read: Kent Modern Slavery Conference](#)
- [Contacts](#)

Welcome

Welcome to the 3rd Child Protection newsletter for 2022-23.

New year brings with it new challenges with the winter months challenging families with the cost of heating and even eating. There are links to how to refer families struggling in this newsletter. Changes to the LADO process and more. We are aware that there is a lot of information but ask that you try and find time to read and digest its contents as it will help you in your role as DSL.

In the articles below we include links to external websites. These will be in [blue text](#) for you to click on and read further information. We try and provide useful resources but cannot be responsible for their content and advice. Please tell us if you have any issues with any of the links provided.

Education Safeguarding Service Updates

ESS Child Protection Policy 2022-23 Template Updates

We keep our child protection templates under regular review and recommend that DSLs and leaders ensure their Child Protection policies are viewed as working documents. At the end of December, the Service published updated versions of our [Child Protection Policy Templates](#) for schools and early years settings following learning from recent local and national practice reviews.

The version [3 templates for 2022-23](#) have been updated with minor corrections and include additional content about Operation Encompass for schools, and a new section regarding responding to bruising on non-mobile children for early years settings. All new and updated content for 22-23 is highlighted in the templates and we would encourage schools and settings to review their child protection policies and amend or add additional content as appropriate.

ESS Consultation Process Reminder

If you have a query or need safeguarding advice from our service, please call the numbers relevant for your area or the online safety number listed at the end of this newsletter. Your consultation request will then be passed to the duty officer/online safety advisor for that day.

Any emails sent or phone calls made directly to advisors are likely to be redirected to whoever is on duty for that day, so by calling your area or the online safety number first, we can ensure a quicker response to any queries.

Core Safeguarding Training for DSLs

It is essential that Designated Safeguarding Leads (DSLs) undergo appropriate training which provides them with the knowledge and skills required to carry out this essential role. As a reminder, our '[Frequently Asked Questions](#)' on [The Education People's blog](#) explores some common queries which may be helpful for new and experienced DSLs.

We are continuing to provide a blended training offer for 2022-23 and training dates from March until July 2023 are being published shortly via the [CPD website](#). Following delegate feedback, face to face training is our core delivery approach, however if delegates are unable to attend face to face training for any reason, virtual options are also available as an alternative.

- [Event Catalogue for Safeguarding for Schools](#)
- [Event Catalogue for Safeguarding for Early Years Settings and Childminders](#)

All DSLs need to access appropriate refresher training **at least every two years**. To avoid disappointment or stress, please check your previous training dates and book your refresher training as soon as possible, rather than wait for your certificate to expire and then try and get on a course. If you require refresher training and are unable to book a face-to-face refresher course in time, we recommend accessing our refresher E-learning courses as an alternative:

- [Designated Safeguarding Lead Refresher \(for Kent Schools/Colleges\) 2022-23](#)
- [Early Years Designated Safeguarding Lead Refresher \(for Kent providers\) 2022-23](#)

As a reminder, please ensure you download a copy of any certificates of attendance as soon as possible to ensure that you have evidence to hand if it is required, for example by Ofsted.

For any training queries, please contact your Area Safeguarding Advisor or the [Training and Development Manager](#).

Safeguarding Support Package for Schools

Our 'Safeguarding Support Package for Schools' is now into its second year! Members receive academic year access to a range of up-to-date advice and resources, as well as exclusive access to content and cost saving benefits, including:

- access to staff training presentation resources for DSLs to use internally



- access to a staff induction safeguarding awareness E-learning course
- access to a downloadable resource library which includes a range of guidance documents and time-saving templates
- at least annual updates to existing content, plus a minimum of 6 new resources added to the resource library per year
- 1 free place at each of our six annual DSL Briefing twilight sessions – our next session in February will be exploring how schools can respond to online challenges and hoaxes.

The cost for academic year access is £510 plus VAT (credits can also be used) and provides schools with a significant saving compared to purchasing content on an individual basis.

NSPCC Resources

A reminder that Sarah Murphy is the NSPCC East Kent Co-ordinator on 01634 564692 / 07710 147689 sarah.murphy3@nspcc.org.uk. She has provided us with some suggested resources which schools may find helpful to be aware of.

Primary Pupils (KS1 & KS2, age 5-11)

PANTS – The Underwear Rule - a simple way to talk to younger children about staying safe from sexual abuse. Download free resources including a lesson plan, slide presentation, curriculum links, classroom activities and more here: <https://learning.nspcc.org.uk/research-resources/schools/pants-teaching>

‘Speak Out. Stay Safe’ virtual assemblies and workshops, co-hosted by Ant & Dec, with fully prepared, classroom resources, to extend learning: www.nspcc.org.uk/speakout. Register for the virtual assemblies here: <https://learning.nspcc.org.uk/services/schools-form>. The programme helps children understand abuse in all its forms and how to recognise signs of abuse, that abuse is never a child’s fault and that they have the right to be safe and where to get help and the sources of help available to them, including the Childline service.

SEND pupils: a specially adapted version of *‘Speak Out. Stay Safe.’* for delivery on a 1:1/small group basis over 6 sessions with a range of adaptable supporting materials. Invaluable to support children on EHC plans who are often supported by a 1:1 adult. Register here: <https://learning.nspcc.org.uk/services/schools-send-form>

Secondary/Further Education Pupils (11+)

It's Not OK helps children and young people recognise concerning behaviour and identify characteristics of positive relationships. The lesson plans, films and accompanying activities cover what behaviour to look out for and how to respond to it: <https://learning.nspcc.org.uk/research-resources/schools/its-not-ok>.

It's Not OK reinforces the importance of building and maintaining positive relationships and recognising and responding to behaviour relating to online safety, grooming, ‘sexting’, harmful sexual behaviour, child sexual abuse and child sexual exploitation.

Love Life resources for young people with learning disabilities - films and supporting resources to explore topics such as emotions, relationships and identity with young people with SEND aged 11-25: <https://learning.nspcc.org.uk/research-resources/schools/love-life>. The resources enable adults to start

conversations with young people about feelings, privacy and boundaries, friendship, different kinds of love and online safety.

Stop Speak Support [School Pack](https://learning.nspcc.org.uk/research-resources/schools/stop-speak-support-school-pack) – prevention of cyberbullying: targets teenagers who are 'bystanders' of online bullying – it encourages pupils to be good digital citizens and equip them with the skills to know what they should do if they encounter bullying online. The pack can be accessed here: <https://learning.nspcc.org.uk/research-resources/schools/stop-speak-support-school-pack>

Talk Relationships an e-learning course for teachers who deliver Relationships & Sex Education in secondary schools which will be available initially at no cost, for a time-limited period, from September 2022 (usual price £25). The resources aim for all young people to grow up understanding healthy and harmful behaviours within relationships, recognising their right to be safe, heard, and respected, and knowing how to get help from a trusted adult if they need it. More information is available at <https://learning.nspcc.org.uk/services/talk-relationships-ryi>

Kent & Medway Hope Hack

The Hope Collective and partner organisations in Kent and Medway are inviting young people, aged 14-24, to the 'Kent & Medway Hope Hack'. This is an event that aims to bring young people together to explore and develop innovative solutions to societal challenges that contribute towards serious violence. The event will be hosted and led by young people and include presentations, a panel, a keynote speaker, facilitated workshops to explore key themes, and an opportunity to provide feedback and questions to decision makers. The findings will be summarised to give clear recommendations for policy makers, cross sector leaders and Government in the 'Reimagined report' to be published in May 2023. They are inviting young people to register – places are limited so please do ensure those who register attend on the day.

Kent would like to use this initiative locally to listen to young voices and support them in making these changes happen now. **There is a prize up for grabs of £5000 to put the winning team's theory into practice.**

The event will include keynote speakers of interest to young people but essentially will be hosted and led by young people with facilitated workshops to explore the selected 4 key themes below which were decided in Kent, by Kent youths:

- Mental & Physical Health
- Poverty & inequality
- Racism & Division
- Community Safety

The session will take place on the 28th February (9:30-3.40pm) at the Ashford International Hotel, Simone Weil Ave, Ashford TN24 8UX. Register here: vru.programme.delivery@kent.police.uk

The Role of the Personal Advisor with Care Leavers

Once a young adult ceases to be Looked After, the Local Authority will no longer be required to provide them with a social worker to plan and co-ordinate their care. At this stage, the Local Authority must, appoint a Personal Advisor (PA) to support the young adult. The PA will act as the focal point to ensure that the young adult leaving the care of the Local Authority continue to be provided with the right kind of personal support.

The PA is responsible for supplying *information, advice, guidance and support* to help the young adult to develop the skills and experience to live as independently as possible (building on the work already

undertaken by their previous Social Worker). This support encompasses all aspects of their lives, but is generally focused on:

- Accommodation
- Finance
- Health
- ETE (employment, training and/or education)
- Emotional & Behavioural wellbeing, family & social relationships

All Care Leavers should be aware of who their PA is and how to contact them, so that throughout their transition to adulthood they are able to rely on consistent support from their own key professional. The PA will be identified for young adults after they become 17-years old; this is to support the building of relationships before they become the allocated worker. *Follow these links for more information:*

- Introduction to Local Offer and 18+ Care Leavers Service: [Introduction to the Local Offer and the 18+ Service](#)
- Role of Personal Advisor: [The Role of the Personal Adviser](#)
- Care Leavers Local Offer: [Care leavers local offer - Kent County Council](#)

Early Years and Childcare

Responding to bruising on non-mobile children

Bruising in babies, infants or children with complex needs that are not mobile (meaning a child who is unable to move independently through rolling, crawling, cruising, or bottom shuffling) is unusual and should always be explored.

If you are concerned about actual or suspected bruising on a non-mobile child, you should ensure you respond in line with the [Kent and Medway Protocol for the Management of Actual or Suspected Bruising in Infants and Children who are not Independently Mobile](#) procedures (2.2.8).

We have added information to our early years child protection policy template for 2022-23 and would encourage settings to ensure that:

- If a non-mobile child has a bruise/mark, staff should inform the DSL immediately, and describe and document the mark accurately on a body map, including the size, shape, colour, and position of the mark/s on the head and/or body.
- Any explanation of the history of the injury or comments by the parents/carers should be documented accurately (verbatim) in the child's record, along with the body map.
- If there is a concern about parental response to the injury, no explanation, or an explanation that is inadequate, unlikely or does not rule out abuse or neglect, then an immediate referral should be made to the Front Door, who have responsibility for arranging further multi-agency assessments.
- If a child appears seriously ill or injured, emergency treatment should be sought through an emergency department (ED) and Integrated Children's Services should be notified of the concern and the child's location. If there are concerns regarding the immediate safety of the child or staff, the police should be called.

If there is any doubt as to how settings should respond to bruising on a non-mobile child, advice can be sought from the Education Safeguarding Service and/or the Front Door/Out of Hours team.

Longer read and resources

- ['Why child protection policies on bruising to babies need to change'](#)
- [Bruises in premobile infants: a contested area of research, policy and practice](#)

'Best start in life part 1: setting the scene'

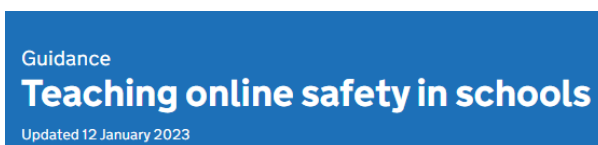
Ofsted's 2022 report '[Best start in life part 1: setting the scene](#)' delves into research examining the components that contribute to an effective, high-quality early education, with a focus on the pre-school age range. The review explores and considers how practitioners can help and ensure children have 'the best start in life' following the COVID-19 pandemic.

In addition to this, the [Harm to under 2's in Kent thematic review](#) and in particular the positive practice audit is especially relevant to EYDSLs. The findings won't come as a surprise: *'Multi-agency collaboration, good quality assessment and case-recording, management supervision, building meaningful relationships with families and offering creative and practical support are basic requirements that most would likely highlight as essential for effective safeguarding. What it might indicate for the Partnership, is a need to 'get back to basics' following the interruption the pandemic caused to 'business as usual.'*

Online Safety

DfE 'Teaching online Safety in Schools' Updated for 2023

On the 12th January 2023, the DfE published an updated version of their non-statutory guidance '[Teaching online safety in schools](#)' which outlines how schools can ensure their pupils understand how to stay safe and behave online as part of existing curriculum requirements. This document includes updated information and additional links, and we would encourage DSLs to ensure they and their curriculum leads are familiar with the updated content.



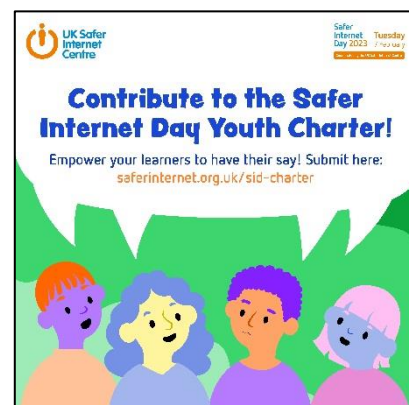
The service is regularly asked to recommend curriculum materials and/or resources for schools to share with children and parents; the updated document signposts to the organisations that we typically recommend for use by schools and settings in the 'further sources of support section'. Additional links can also be found on our [website](#).

Safer Internet Day 2023 – Register your Support!

[Safer Internet Day 2023](#) will take place on the 7th of February 2023, with celebrations and learning based around the theme 'Want to talk about it? Making space for conversations about life online'. Coordinated in the UK by the [UK Safer Internet Centre](#), Safer Internet Day 2023 provides a fantastic opportunity for schools and settings to ensure children and young people's voices are heard by taking the time to listen to them and make positive change together. With your help, Safer Internet Day 2023 can be a springboard for conversations that shape how we talk about and respond to online issues, not just for one day, but throughout the whole year.

We encourage Kent schools and settings to [register themselves as supporters](#) to ensure your organisations involvement is captured by the UK Safer Internet Centre. [Educational resources](#) to use with children and young people aged 3-18 are available to download and use on the day. There is also a [Social Media Pack](#) for supporters now available.

The UK Safer Internet Centre are also creating a [national youth charter](#) setting out children and young people's agenda, and the changes they want to see in how they're supported online, which will be delivered to government and the internet industry. The UK Safer Internet Centre are inviting schools and other organisations to create their own youth



charters using a template and to submit their key asks. For more details on delivering this activity in your setting, download the youth charter activity [here](#).

PSHE Association: Addressing Misogyny, Toxic Masculinity and Social Media Influence through PSHE Education

Schools are increasingly raising concerns regarding the potential impact of online influencers who may be promoting misogynistic and/or other problematic ideas. This type of content can promote and encourage discriminatory behaviours and attitudes (including racist, antisemitic, homophobic, transphobic, and misogynistic attitudes), sexual harassment and abuse, abuse in relationships, and victim-blaming narratives which can ultimately present a number of safeguarding challenges for schools. The impact of this content can also be magnified as it can tap into insecurities children or indeed adults may have about body image and agency, and the frequent focus on money, success and power can play on financial and status insecurities, which can lead to risky and even illegal behaviours.

Robust RSE/PSHE education can play a crucial role in proactively tackling this issue by developing children and young people's understanding about healthy relationships, respect, self-esteem, digital literacy, economic wellbeing, critical thinking, and recognising and challenging negative influences. When taught well, education approaches should explore the links between these areas within the context of a coherent, spiral curriculum. To support effective education around this issue, the PSHE Association has published an online article and downloadable PDF which provides practical tips on areas of the PSHE / RSE curriculum to focus on, and what resources to use.

The resource covers:

- Understanding the issues and risks
- Teaching about these topics safely, including avoid focusing lessons on specific influencers, websites or groups that may promote harmful attitudes and establishing safe learning environments
- Addressing issues at KS1-2
- Developing learning at KS3-4
- Choosing the right resources

ProjectEVOLVE: New Online Bullying Resources Available

As part of anti-bullying week 2023 [ProjectEVOLVE](#) released [brand-new resources](#) available for ages 3 -11 that have a focus around online bullying. These new resources have been created with consultation and feedback from partner organisations around online bullying and are available to use for free within the toolkit. Included in the resources are questions to ask, outcome criteria, and supporting activities to engage the classroom. Educators can also use the knowledge map feature to gauge classroom responses towards scenarios and identify where understanding lies.



Updates and Resources

Allegations against staff/volunteers within the Kent children's workforce

The Professional LADO Referral form for the County LADO Service (CLS) will be live on the **Kent integrated children's services portal** from **16 January 2023**. This is the same portal for submitting requests for support to the Front Door Service.



All professional referrals to the CLS must be submitted via the portal. There will be a 3-month period to

allow professionals to adjust to the new process. However, after 16 April 2023 referrals on the 'old' word document and emailed into the CLS mailbox will no longer be accepted or processed within the system. To access the Kent children's portal, you will need to set-up an account if you do not already have one. When you are registered, you can use the same account for any subsequent referrals - you will always receive an authentication code, however this should be received quickly and ensures security of the information submitted.

NB – the Parents/Carers LADO referral form will be on the portal shortly – in the meantime, please follow the usual process of completing and sending into the LADO mailbox: KentchildrensLADO@kent.gov.uk

Like to know more about what they do at 'The Front Door'?

Bi-monthly introductions to the service are held monthly from 1pm to 2:30pm on MS Teams. Please email Heidi.Turtle@kent.gov.uk, Georgina.Lindup2@kent.gov.uk or Sonja.Norwood@kent.gov.uk to be sent the link to the introduction.

Sessions for this year are:

- Friday 14 April 2023
- Friday 2 June 2023
- Friday 4 August 2023
- Friday 6 October 2023
- Friday 1 December 2023

Professional Referral Fuel Voucher Scheme

Funded by the UK government, the Household Support Fund scheme supports vulnerable Kent households in need of help with significantly rising living costs. As one element of support, there is a scheme for professionals to refer people into. This information is for professionals only to support them in making applications, **details are not to be shared wider.**

The scheme is now live and available for applications to be made. You can apply up until 31 March 2023, or until the budget is spent. There is a limited amount of funding available for this scheme and funds will be distributed on a first come, first served basis, with only **one award per household.**

If successful, support will be provided in the form of £100 Post Office cash-out voucher to be used to pay for energy costs within the household. They are also able to consider providing vouchers to off-grid customers. Vouchers will be sent by email or text. If the person responsible for paying the energy bill within the household does not have a mobile phone or access to an email account, the vouchers can be posted to their home address.

Who is eligible?

There is an expectation for professionals to complete due diligence checks of applications to ensure that recipients of vouchers meet the eligibility criteria as set out below:

Applicants must

- be aged 16 or over
- be a Kent resident, permanently living within one of the 12 local authorities covered by Kent County Council (this excludes Medway, Bromley, and Bexley)
- be in receipt of means tested benefits, or household income is less than £30,000 per annum before tax
- not have savings above £250

- not be receiving free school meals support for any child within their household (they will be receiving a payment via their children's school)

Individuals that have received the following support payments below are **not** eligible for support through the Professional Referral Fuel Voucher Scheme:

- £650 Cost of Living Payment (paid in two instalments)
- £150 Disability Cost of Living Payment
- £300 Pensioner Cost of Living Payment Winter Fuel Payment 2022/23

Residents with no recourse to public funding are still eligible for the scheme. If a National Insurance number is not available, please email helping.hands@kent.gov.uk with circumstances and reasons why the applicant should receive this support. Please attach all supporting evidence to the email.

If you have **not** referred into the scheme previously, please click on the following [link to register](#).

If support is required because of the increase in cost of living, apply for the Household Support Fund on the following link: [Professional Fuel Support Scheme](#)

Unconscious Bias and Cultural Competence in Safeguarding Children: Virtual Course

Designed for frontline practitioners working with children and families, this course will explore the role bias can play in assessments and the understanding of family dynamic, by exploring personal beliefs and expectations. The discussions will examine how we measure risk to children from different backgrounds. The course will also use some case examples to explore how this unfolds in practice.

The course has been commissioned in response to learning identified in Kent Local Child Safeguarding Practice Reviews. The course will be delivered virtually, and six dates are available in early 2023.

Dates

Friday 20 th January 2023, 9.30am to 3pm	Friday 10 th March 2023, 9.30am to 3pm
Thursday 2 nd February 2023, 9.30am to 3pm	Monday 20 th March 2023, 9.30am to 3pm
Friday 24 th February 2023, 9.30am to 3pm	Friday 30 th March 2023, 9.30am to 3pm

Booking is via the [KSCMP training portal](#) from Monday 19th December 2022. If you do not already have an account on the new KSCMP training portal, you will need to [create one](#) before you are able to book a space.

Please note: To book, attendees will need to first enroll on the course. Once enrolment has been accepted by the KSCMP Business Team, a space can be booked on the relevant date. A place has only been booked once **both** enrolment on the course and the event has been completed. Confirmation of enrolment is not a booking confirmation. The KSCMP non-attendance fee policy will apply for this course.

Groomed, Radicalised, Gone

The complexities of radicalisation when a child engaging in potential terrorism is explored and critiqued in this short documentary by the BBC. It comments on Rhianan Rudd who at 15 became the youngest girl charged with terror offences in the UK but took her own life in a children's home in May 2022. It was later recognised that she was exploited and groomed herself. BBC News investigates her plight and explores the issues of how the police and other agencies dealt with her case. The link to the short programme is available [here](#).



Hateful Extremism Conference

Tickets are now live for you to obtain tickets for the confirmed 2023 Hateful Extremism Conference, to be held again at the Mercure Hotel, Maidstone and online. 28.02.2023, 0915 – 1700 – in partnership with Kent Police and Counter Terrorism Policing Southeast.



Links to the tickets are below, please note there is one link for In Person (100 tickets available) and a second link for online attendance, with no limit to numbers.

- **In Person link** - <https://InPersonHatefulExtremismConference2023.eventbrite.co.uk> – this includes refreshments and lunch
- **Online link** - <https://OnLineHatefulExtremismConference2023.eventbrite.co.uk>

The agenda will be sent in due course to attendees, but there are planned keynote speakers booked who will be sharing with delegates relevant and timely information making this a key learning event for 2023.

Children's Mental Health Week 2023

Children's Mental Health Week 2023 will take place from 6-12 February 2023 with the theme of 'Let's Connect'. Whether you organise an assembly, run a class activity, or take part in a creative video activity, there are many ways that schools and settings can explore the theme with the children and young people they work with.



Further resources can be found here: [Spread the word - Children's Mental Health Week \(childrensmentalhealthweek.org.uk\)](https://www.spreadtheword.org.uk) and Place2Be's free resources for [primary](#) and [secondary schools](#) will help you take part in the week, and help raise awareness of the importance of children and young people's mental health.

Update from NELFT

Following a recent consultation with GPs, schools and parent/carer forums, some urgent improvements are being made to NELFT's referral process for Neurodevelopmental and Learning Disabilities Service. The NELFT website is currently under redesign to make sure that it reflects those improvements. The screening forms have been causing some delay in referrals being made due to the format they are in, so they have been temporarily removed to make them more family and digitally friendly. NELFT have also added a 'download a copy of your referral' function for record keeping and referrers will now receive an email receipt to reassure referrers that the forms have been received by NELFT.

There is a notice on the existing referral page [Neurodevelopmental and Learning Disabilities Service website](#) explaining that while some of these improvements are being implemented, all mental health concerns and requests for autism (ASC) and Attention deficit hyperactivity disorder (ADHD) assessments should be made through the Single Point Of Access (SPA). This should be done using the [request for support form](#) on the [SPA referral page](#).

DUST Training

Many DSLs may have attended or heard about DUST training historically, however, the DUST service encourages that this training is attended on a yearly basis. Refresher training is regularly updated, offering information around the ever-changing world of drugs and alcohol to make sure you have the most up-to-date and relevant information.

You can book as an individual following [this link](#) or, if you would like to book a bespoke delivery for a whole team, email yadmin@wearewithyou.org.uk and they can schedule for one of their Early Intervention practitioners to deliver a face-to-face training session.

If you have any questions around DUST training for individuals or a whole team, please contact 'We are with you'

- Tel: 01795 500881
- Fax: 01795 503138
- Secure e-mail: yps.kent@wearewithyou.cjsm.net
- Twitter: @AddYPSKent
- Instagram: @withyoukentyp

**we are
withyou**
in Kent
for Young People

Cognitive impairment in dependent drinkers

As part of Alcohol Change UK's national initiative to improve the way services identify and address the need of cognitively impaired dependent drinkers, Kent County Council have arranged a series of webinars on topics relevant to anyone who encounters dependent drinkers in their work. This will include practitioners in substance misuse, adult social care, mental health services, memory and brain injury services, housing and homelessness, primary and secondary healthcare, police, domestic abuse, probation services and community safety.

There is a line-up of presenters from diverse disciplines and there will be time for questions at the end of each event. You are invited to attend any of the events that are of interest. [Please find further information and booking details via this link.](#)

A Longer Read: Kent Modern Slavery Conference October 2022

When we hear the term 'slave trade,' we might think about the global slave trade in the 16th – 19th centuries, where between 10 and 12 million African people were enslaved, sold, and trafficked into the Americas. Would you be surprised then to hear that in 2022, it is estimated that 50 million people are currently enslaved worldwide? There are more people in slavery in the modern world than there has ever been before.

Education Safeguarding Service colleagues Claire Ledger and Carlie Tyler recently attended "First Encounters: Kent Modern Slavery Conference" hosted by [STOP THE TRAFFIK](#) Kent; a community group based in Canterbury, whose aim is to bring the community together through campaigning, education, victim support, and multi-agency working to combat human trafficking in Kent. There was a huge amount of information shared on the day, but here are a few things that we felt were important to share.



Something that stuck out for us was the role that schools have played in some of the work undertaken by **Kent Police's Modern Slavery and Human Trafficking Team** in bringing perpetrators to justice.

Operation Mayfly saw a Kurdish Organised Crime Group brought to justice. Schools identified signs that some of their female pupils were being sexually exploited and reported this promptly to the correct services.

As a result of **Operation Geode**, two Czech nationals were found guilty and sentenced to more than 13 years in prison for human trafficking in Kent. Their young son regularly told school staff that Daddy made money from 'horses.' School staff exercised professional curiosity and worked with agencies to establish that 'horses' is often a word used to describe humans who are being exploited.

A school played a crucial role in **Operation Paisley** when they alerted services to concerns that a child had been 'auctioned' by her father to perpetrators in Turkey, for the purpose of forced marriage. The relationship the child had with school staff meant she was able to confide in staff before she came to further harm.

Practitioners are reminded that children cannot consent to any form of exploitation. Those in control may have groomed the child to believe they have choice in the early stages of the grooming process, but we know that this is not the case. There are many ways that children become trapped in their exploitation, and eventually they become aware that any autonomy they had, or felt they had, is quickly removed. One of the ways gangs do this, is using **debt bondage**. Organised criminal groups may set their victims up in staged robberies, meaning that the child believes they are in debt to the perpetrators. The child then must work to pay off the perceived debt. This is also the case if the child is genuinely robbed, if they lose the item they are carrying, or if they are arrested and the item is confiscated by the police.

Keeping Children Safe in Education 2022 tells us that "*all staff... should consider whether children are at risk of abuse or exploitation in situations outside their families. Extra-familial harms take a variety of different forms and children can be vulnerable to multiple harms including (but not limited to) sexual abuse (including harassment and exploitation), domestic abuse in their own intimate relationships (teenage relationship abuse), criminal exploitation, serious youth violence, county lines, and radicalisation.*"

A reminder of potential signs of children in modern slavery:

- Child may move frequently and/or frequently goes missing
- Child may have expensive possessions and/or money without plausible explanation
- Child may have a significantly older/adult "boyfriend."
- Child may be socially isolated with a lack of positive, meaningful relationships.
- Child may show signs of psychological numbing, trauma and/or signs of physical neglect.
- Child may appear to be physically or emotionally distressed.
- Child may be fearful of someone.
- Child may use over sexualised language or behaviour.
- Child may be collected from school by different unrelated adults.
- Child may not be attending school and/or going missing.
- Child may rarely leave the house.

The arrival of migrants on Kent coasts is an issue that children in our schools and settings will be hearing about, not least because of the [news reporting](#) surrounding the distressing incident in October 2022,

where an individual threw incendiary devices at a Home Office immigration centre in Dover. Guest speakers at the conference shared information about how these people are exploited and trafficked to the UK. Many will find themselves in debt bondage, which must be worked off before they receive any of the 'benefits' they were promised. Failure to do so may result in violence, homelessness, and threats to the individuals' families. Kent's [Prevent Education Officers](#) are monitoring community tensions in light of the recent [Dover attack](#) and ask that you share anything you come across that might help with this.

A useful and practical tip we took away from the conference was the [STOP APP](#). The STOP APP can be downloaded by anyone, anywhere in the world who has access to a smartphone. The app is anonymous, confidential, and secure – it is available in 15 languages and allows the user to submit suspicious activity quickly by sending text-based messages and uploading photos and videos. It enables people anywhere in the world to report suspicious incidents of human trafficking anonymously and securely. A [video](#) is available to give more information on the app, and we recommend that this is shared with staff, pupils, and your wider communities. However, it is also important that your communities have a good understanding of what modern slavery and human trafficking is, to support their understanding of this app.

Did you know?

- The three most profitable trades in the world are:
 1. Drugs
 2. People
 3. Weapons

However, the rate at which people are being trafficked means that it is expected people trafficking will soon become the most profitable trade globally.

- The three most common reasons people are trafficked are:
 1. Criminal
 2. Sexual
 3. Forced labour

Other reasons people are trafficked include domestic servitude and organ harvesting.

- British children are the most trafficked in the UK, and the average age of a child being exploited sexually is 13. Females are most likely to be exploited sexually, and males are more likely to be exploited criminally, however children of any age and any gender can be exploited for any reason.
- A person is 'trafficked' if they are forcibly moved from one place to another for the purpose of exploitation. That move can be from overseas, between counties, or even from one room to another within the same house.

Finally, if you have any questions on the articles, or the need for safeguarding advice, please contact the team using the details provided.

This newsletter is published by the Education Safeguarding Service and issued to schools, early years providers and local authority staff. For this newsletter to be effective, please ensure that it is shared with staff, including all Designated Safeguarding Leads.

Education Safeguarding Service Contacts

Head Office: Room 2.30 Sessions House, County Hall, Maidstone ME14 1XQ	
Claire Ray Head of Service	03301 651 200
Rebecca Avery Training and Development Manager	03301 651 110
Robin Brivio Senior Safeguarding Advisor	03301 651 200
Online Safety	03301 651 500
<p>For advice on safeguarding issues please call your area office on the numbers listed below.</p> <p>If a child may be at risk of imminent harm, you should call the Integrated Front Door on 03000 411 111 or the Police on 999</p>	
Ashford	03301 651 340
Canterbury	03301 651 140
Dartford	03301 651 240
Dover	03301 651 340
Folkestone & Hythe	03301 651 340
Gravesham	03301 651 240
Maidstone	03301 651 440
Sevenoaks	03301 651 240
Swale	03301 651 140
Thanet	03301 651 140
Tonbridge & Malling	03301 651 440
Tunbridge Wells	03301 651 440

Kent County Council Key Contacts

Integrated Front Door: 03000 411 111 (outside office hours **03000 419 191**)

Early Help Contacts (district teams) can be found on www.kelsi.org.uk

LADO Team contact number: 03000 410 888

If your call is urgent i.e. a child is in **immediate danger** and you cannot be connected to the team, call the Integrated Front Door on **03000 411 111**

Email: kentchildrenslado@kent.gov.uk

Kroner House, Eurogate Business Park, Ashford, Kent, TN24 8XU

Area Education Officers

South Kent – David Adams 03000 412 309

East Kent – Marisa White 03000 418 794

West Kent – Nick Abrahams 03000 410 058

North Kent – Ian Watts 03000 414 302

Prevent Education Officers

North/West/ Medway - Sally Green sally.green2@kent.gov.uk 03000 413 439

South/East - Jill Allen jill.allen@kent.gov.uk 03000 413 565